



ABN 43 064 478 842

231 Osborne Avenue Clayton South, VIC 3169
PO Box 1548, Clayton South, VIC 3169
t 03 9265 7400 f 03 9558 0875
freecall 1800 680 680
www.tmgtestequipment.com.au

Test & Measurement

- > sales
- > rentals
- > calibration
- > repair
- > disposal

Complimentary Reference Material

This PDF has been made available as a complimentary service for you to assist in evaluating this model for your testing requirements.

TMG offers a wide range of test equipment solutions, from renting short to long term, buying refurbished and purchasing new. Financing options, such as Financial Rental, and Leasing are also available on application.

TMG will assist if you are unsure whether this model will suit your requirements.

Call TMG if you need to organise repair and/or calibrate your unit.

If you click on the "Click-to-Call" logo below, you can call us for FREE!

TMG Corporate Website

TMG Products Website



Click-to-Call
TMG Now



Product Lifecycle Management System

Disclaimer:

All trademarks appearing within this PDF are trademarks of their respective owners.



DASH[®] 8 SERIES

DATA ACQUISITION RECORDERS



- ❖ Signal conditioning for any application
- ❖ 10.4" color monitor for real-time viewing and playback
- ❖ Internal 8 GB hard drive for data capture
- ❖ 100 MB ZIP[®] drive and Ethernet for data transfer
- ❖ 8 channels with 20 KHz per channel sample rate
- ❖ PC-based data review and analysis software
- ❖ Rugged, compact & portable – less than 20 lbs.

 **Astro-Med, Inc**
TEST & MEASUREMENT PRODUCT GROUP

POWERFUL FEATURES – LIGHTWEIGHT, RUGGED

The Dash® 8 series from Astro-Med are powerful data acquisition recorders. Ideally suited for both chart recording and data acquisition, they were designed for today's demanding applications.

BIG COLOR MONITOR

The Dash 8 series recorders feature a built-in, 10.4-inch color monitor that adds another dimension to chart recording. Signals may be displayed in real-time on the monitor, saving chart paper during recorder setup. And to make data even easier to interpret, the Dash 8 allows you to make each channel a different color.

VERSATILE INPUTS

There are two powerful models to choose from. The Dash 8n offers isolated inputs up to 250 VRMS, build-in offset adjustment and an almost unlimited number of full scale selections, giving you the versatility you need for almost any voltage recording. The Dash 8u has flexible universal inputs making your connection even easier. From single ended and differential voltage to thermocouple (J, K, E, T) and DC bridge inputs, the Dash 8u allows you to connect almost any signal without external conditioning. The Dash 8u also supports optional input modules for RTD, isolated high voltage and frequency to voltage.

CHART PRINTING

With all the powerful data capture and display features of the Dash 8 series, it's easy to forget about the integral chart recorder. The high resolution, 8.5 inch chart give you real-time recording at the push of a button. Chart speeds are front panel selectable from 1mm per hour to 100mm per sec. And channels can be displayed in any format, from individual to overlap to completely custom.

FREQUENCY RESPONSE

With 16-bit A/D converters sampling at 20,000 samples per second for each channel, the Dash 8 series gives you the

frequency response you need to record all your data. Signals up to 2 kHz may be displayed, printed and stored to memory.

MEMORY AND STORAGE

Sometimes real-time chart recording is not enough. That's why we designed the Dash 8 series to be both a chart recorder and a data acquisition system.

The internal, 8 Gbyte hard drive lets you capture hours, days or even weeks of data for later review and analysis. And best of all, data can be captured in parallel with (or in place of) real-time recording. With the Dash 8 series you get the best of both worlds, in one compact, rugged package.

REVIEW AND PLAYBACK

Once data has been captured to memory, the Dash 8 series monitor really goes to work. Captured data may be displayed on the screen, giving you a quick look at all your data files. On-screen cursors handle the rest, providing timing and amplitude information. For even more detail, simply zoom in on important events and print the screen. With the Dash 8 series recorders, you print only what you want.

GET YOUR DATA QUICKLY AND EASILY TO A PC

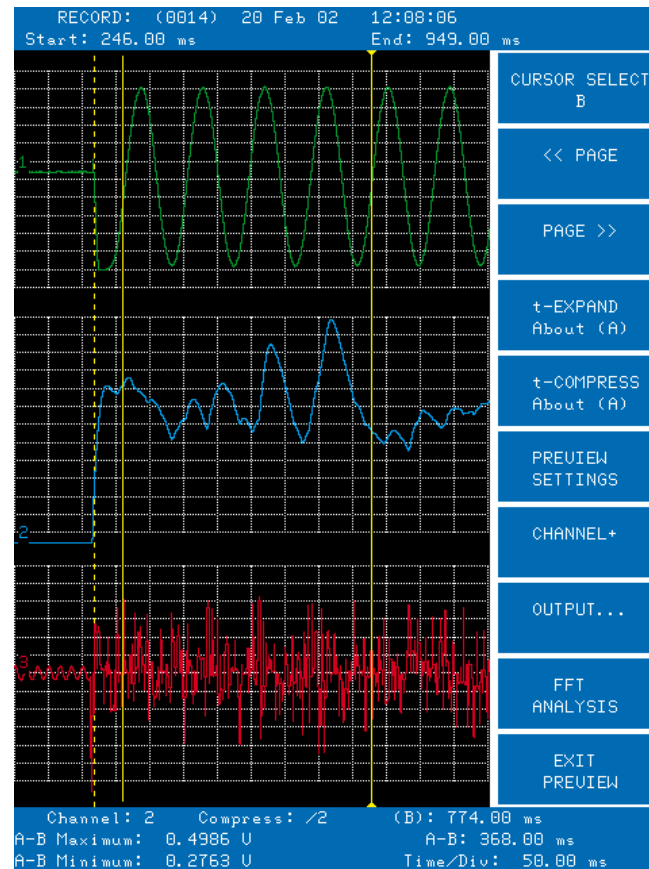
The Dash 8 series offers a variety of option to get captured data to your PC quickly and easily. For smaller files, simply copy data to the Dash 8's ZIP drive and carry it to your PC. When direct connection to a PC is desired, the Dash 8 has both an Ethernet and SCSI port for data transfer.

SETUP YOUR ENTIRE TEST FROM YOUR PC

AstroSET, the Dash 8 series offline setup program, makes setting up a test easier than ever. With its intuitive interface, this Windows-based program gets you up and running in minutes.

INTELLIGENT TRIGGERING

The Dash 8 series recorders offer versatile triggering including waveforms, event pattern, manual pushbutton or an external source. In addition, the recorder can be set to trigger at a specific time, or periodically at a fixed time period.



Real-time full size color monitor.

LIGHTWEIGHT, RUGGED, AND PORTABLE

The Dash 8 series pack a lot of power into a compact aluminum case. Weighing under 20 pounds, these recorders can easily fit under the seat of an airplane.

SPECIFICATIONS

DASH 8N INPUTS

Number of Channels	8
Input Type	Isolated, single-ended
Connector	2 guarded banana jacks
UL Rated Input	250 Vrms
Measuring Range	50 mV full scale to 500 V full scale
Bandwidth	2 kHz (-3dB)

DASH 8U INPUTS

Number of Channels	8
Input Type	Universal
Connector	Screw terminal with removable connector

VOLTAGE INPUTS

Types	Isolated single-ended, isolated differential
Absolute Maximum Input. . .	Single-ended: 40 V differential: 40 V
Measuring Range	Single-ended: 500 mV to 40 V full scale Differential: 5 mV to 500 mV full scale
Bandwidth	2 kHz (-3dB)

THERMOCOUPLE INPUTS

Types	J, K, E and T
Absolute Maximum Input. . .	40 V
Measuring Range	Type J: 0° C to 760° C Type K: 0° C to 1370° C Type T: -160° C to 400° C Type E: -100° C to 1000° C
Bandwidth	10 Hz (-3dB)
Isolation	250 Vrms (between iso-commons and chassis)
Engineering Units	°C or °F

DC BRIDGE INPUTS

Type	Isolated full bridge
Absolute Maximum Input. . .	40 V
Excitation.	Isolated 10 V at 30 mA
Measuring Range	5 mV full scale to 500 mV full scale
Bandwidth	2 kHz (-3dB)
Isolation	250 Vrms (between iso-commons and chassis)

OPTIONAL DASH 8U MODULES

RTD-8u	Supports platinum RTD's
HV-8u	Accepts voltages up to 250 Vrms
VHV-8u	Accepts voltages up to 600 Vrms
FV-8u	For frequency measurements up to 20 kHz

The following specification are common to both Dash 8n and Dash 8u:

DIGITAL SIGNAL PROCESSING

Sample Rate	20 kHz
ADC Resolution	16-bit
Functions	Filter, RMS, integration, differentiation
Filter Choices	Low pass, high pass, notch, bandpass

EVENT INPUTS

Number of Inputs.	8 external event markers
Input Types	TTL with pull-up

FRONT PANEL DISPLAY

Type	Active matrix color LCD
Viewing Area	10.4 inch (diagonal), resolution: 640x480

CHART RECORDER

Recording method	Direct thermal
Chart Size.	216mm (8.5") W x 139mm (5.5") L; Z-fold, 300 sheets, 137.5 ft.
Resolution	8 dpm (200 dpi) amplitude axis; 10 dpm time axis
Chart Speed	1 mm/hr to 100 mm/sec; ± 2% accuracy
Time marking	Tri-state (x1, x100) mark on either chart edge. Selectable time mark reference (0.02 to 1 sec or external)
Annotation	System log printed automatically (time, date, speed); Each grid has one line of text (128 ASCII characters); An on-demand text buffer available (128 characters)
Data Logger	Numerical printout up to 2 lines/second

DATA CAPTURE

Sample Rate	0.2 Hz to 20 kHz per channel
Disk Capacity	8 Gbyte
Time Stamp	Time/date automatically saved with data
Trigger Point Location	Pre and post-trigger percentage adjustable
Auto Arm	Allows automatic stacking of captures

TRIGGER ACQUISITION SOURCES

Window	All active waveform channels simultaneously
Logic.	AND/OR combinations
Special.	Slew rate or slope/level
Event.	Binary combination of active event states
Clock.	Time of day or periodic
Other Sources	Both manual and hard-wire trigger inputs

RECORD REVIEW

Formats	Strip chart, numeric tabular, XY plot
Display	Preview with cursor measurement
Chart	Playback all or any section at x1/8 to x8

POWER

Input Voltage	90-250 VAC to 500 or 60 Hz (auto-select)
Power Consumption	100 watts typical, 200 watts maximum

PHYSICAL

Case Material.	Aluminum
Dimensions6.4" (16.26cm) L x 11.2" (28.44cm) W x 5.2" (13.2cm) H
Weight.	20 lbs. (9.09kg)

ENVIRONMENTAL

Operating Temperature	5 to 40 degrees C
Non-Operating Temperature. . .	-15 to 60 degrees C
Operating Humidity	10% to 95%, non-condensing

MISCELLANEOUS

ZIP Drive	100 Mbyte capacity
Utility Port	Connections for start/stop, remote drive, trigger and events
Controls	Full alphanumeric keypad, softkeys, encoder wheel
Built-in Help/Reports	General, system status, chart information

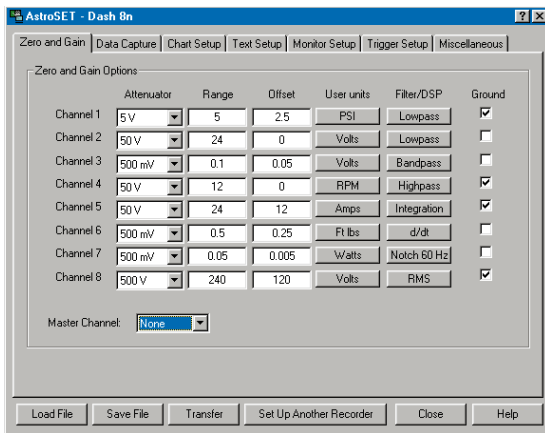
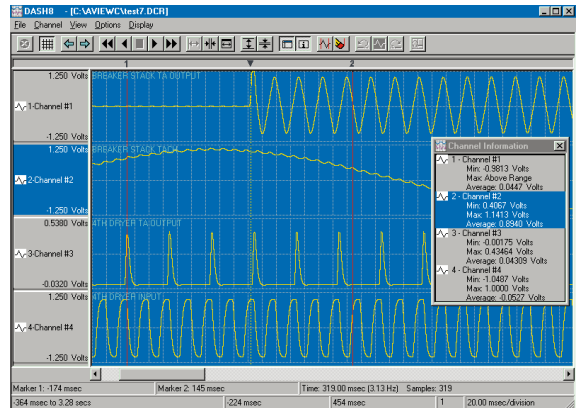
SETUP AND REVIEW SOFTWARE

ASTROVIEW C REVIEW AND ANALYSIS SOFTWARE

AstroVIEW C, the Windows-based data review software for the Dash 8 series, makes it easier than ever to review and analyze your data. From viewing data on your PC monitor to importing data into your data analysis program, AstroVIEW does it all. AstroVIEW C is designed for Windows® 95/98/ME and Windows NT/2000.

AstroVIEW is simple enough for anyone to use but powerful enough to handle however much data you give it. For troubleshooting or trending applications, it lets you review an entire record - minutes, days, or even weeks of data - on a single screen. And for even more detail, simply click on important data and perform a time or amplitude zoom in seconds. AstroVIEW also offers built-in analysis functions such as Fast Fourier Transforms, RMS conversion, and lowpass filtering.

After capturing data and reviewing it in AstroVIEW C, built-in conversion routines allow you to convert Dash 8 series data to popular spreadsheet formats such as Excel®, Lotus® 1-2-3, DADiSP™ and MathCad™. It has never been easier to get data from your recorder to your spreadsheet or analysis program.



ASTROSET SETUP SOFTWARE

Are you more comfortable in a PC environment? If you are, then you will truly appreciate our Windows-based AstroSET offline setup program. With AstroSET, all Dash 8 series setup is done on your PC, with the familiar Windows graphical interface that you are used to. You can set analog gains, speeds, capture settings - virtually every recorder setup that you want. When your setup is complete, simply download it to the Dash 8 series via the Ethernet interface. For remote applications, copy your setup to Zip disk and load it in the Dash 8 series in the field - it's that easy!

Windows and Excel are registered trademarks of Microsoft Corporation. ZIP is a registered trademark of Iomega Corporation. Lotus 1-2-3 is a registered trademark of Lotus Development Corporation. DADiSP is a trademark of DSP Development. MathCad is a trademark of MathSoft, Inc.



World Headquarters

Astro-Med Industrial Park
West Warwick, Rhode Island 02893 U.S.A.
Phone (401) 828-4000 • Fax (401) 822-2430
E-mail: mtgroup@astromed.com
Web Site: www.astro-med.com
Toll-Free Phone (U.S.A. only):
(877) 867-9783

Astro-Med is system certified to ISO9001.

FACTORY SALES AND SERVICE CENTERS

CANADA • Astro-Med, Inc., 648 Rue Giffard
Longueuil, PQ J4G 1T8 Canada • Tel. (450) 651-7973 / Fax (450) 651-8987
UNITED KINGDOM • Astro-Med House, 11 Whittle Parkway
Slough, Berkshire SL1 6DQ • Tel. (44) (1628) 668836 / Fax (44) (1628) 664994
FRANCE • Astro-Med SNC, Parc d'Activités de Pissaloup, 1 Rue Edouard
Branly, 78190 Trappes • Tel. (33) (1) 3482.0900 / Fax (33) (1) 3482.0571
GERMANY • Astro-Med GmbH, Senefelderstraße 1/T6 D-63110 Rodgau
Tel. (49) (6106) 75033 / Fax (49) (6106) 771121
ITALY • Astro-Med S.R.L., Via Plezzo 8, 20132 Milano
Tel. (39) (02) 2641.1909 / Fax (39) (02) 2641.2828