



ABN 43 064 478 842

231 Osborne Avenue Clayton South, VIC 3169
PO Box 1548, Clayton South, VIC 3169
t 03 9265 7400 f 03 9558 0875
freecall 1800 680 680
www.tmgtestequipment.com.au

Test & Measurement

- > sales
- > rentals
- > calibration
- > repair
- > disposal

Complimentary Reference Material

This PDF has been made available as a complimentary service for you to assist in evaluating this model for your testing requirements.

TMG offers a wide range of test equipment solutions, from renting short to long term, buying refurbished and purchasing new. Financing options, such as Financial Rental, and Leasing are also available on application.

TMG will assist if you are unsure whether this model will suit your requirements.

Call TMG if you need to organise repair and/or calibrate your unit.

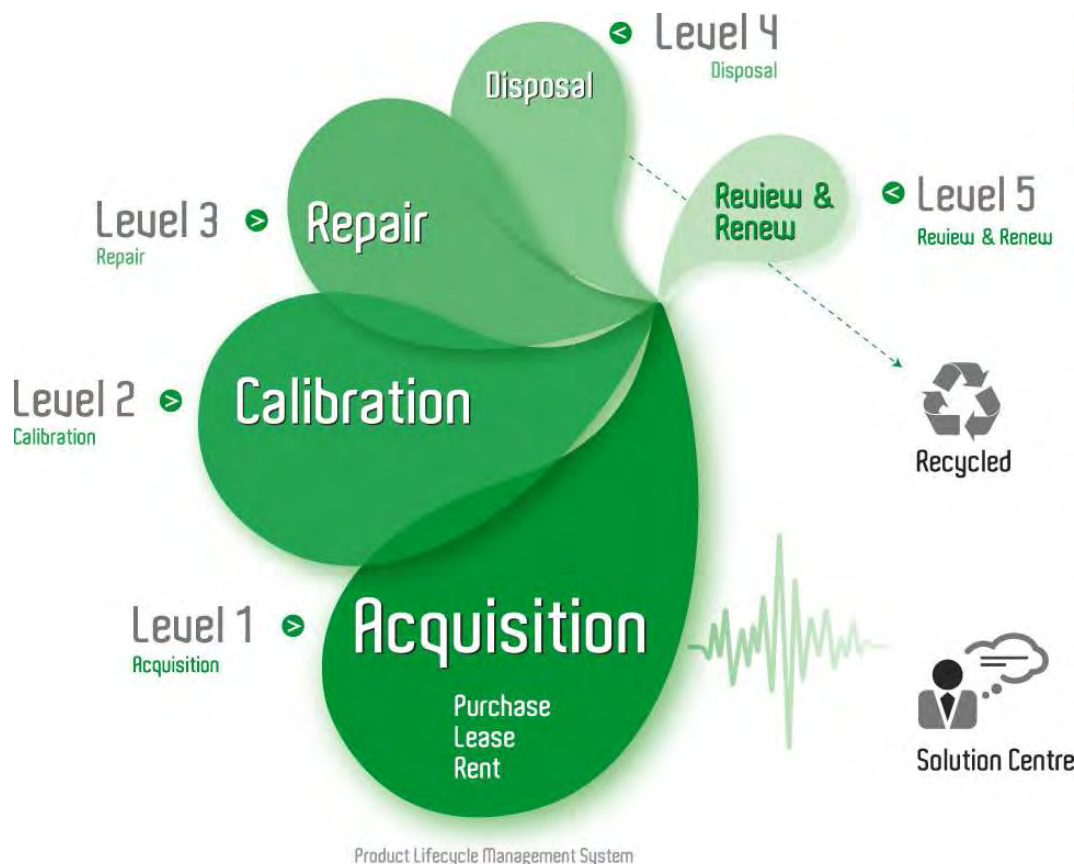
If you click on the "Click-to-Call" logo below, you can call us for FREE!

TMG Corporate Website

TMG Products Website



Click-to-Call
TMG Now



Disclaimer:

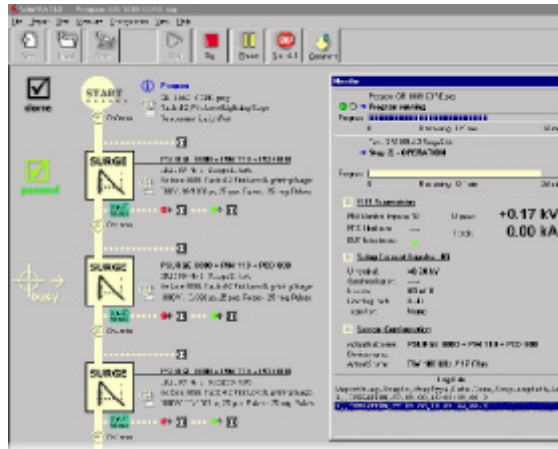
All trademarks appearing within this PDF are trademarks of their respective owners.



WinFEAT[®] CONTROL SOFTWARE

"Fast, Easy, Accurate Testing & Reporting"

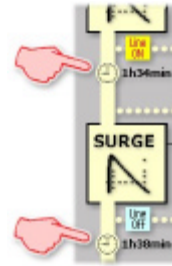
www.haefelyemc.com



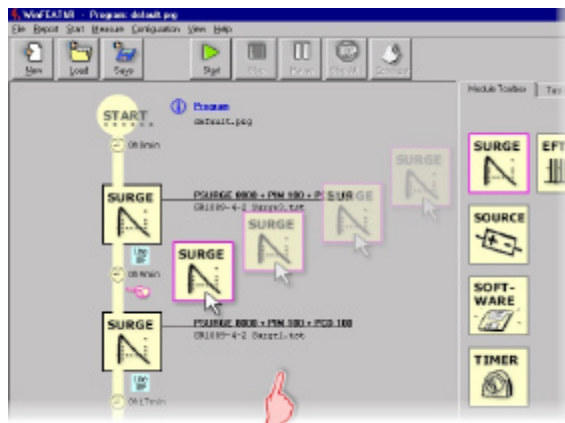
Monitor of running tests ↑

← **Easy, intuitive** understandable operation

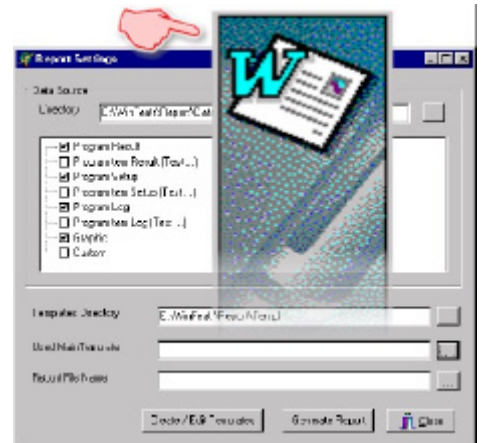
← **Clear, graphical presentation** of tests and program processes.



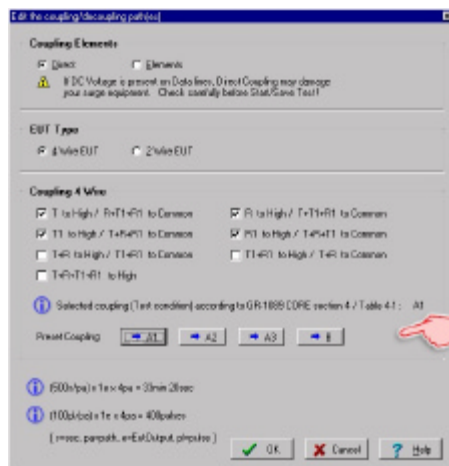
← **Supervision of testing time** in programming state (preview of expected testing time even without hardware connected)



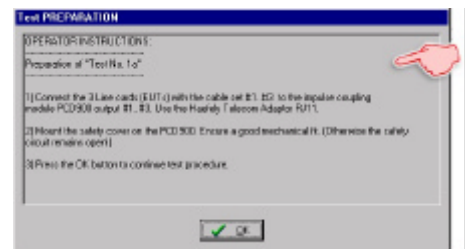
↑ Sequence programming based on **Drag & Drop** technology



↑ **Automated WinWord™ Report Generator** with predefined templates that can be easily changed. (WinWord™ .dot standard)

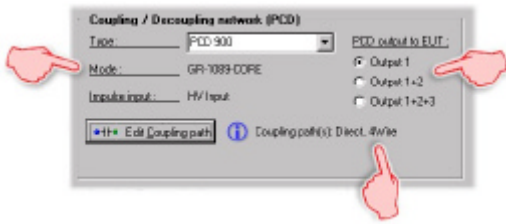


↑ Impulse and Coupling Module Set up dialogs with **pre-set buttons** for specific standards



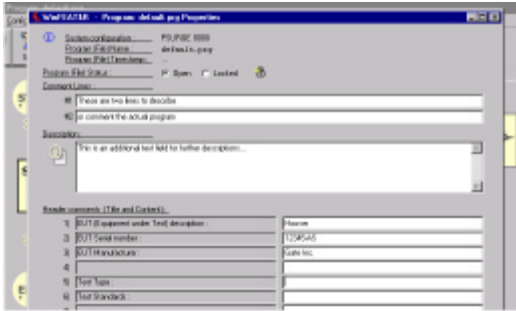
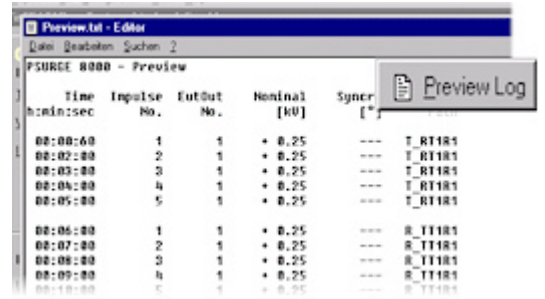
↑ **Test preparation and programming in the office.** Freely definable message boxes with test rules, connection orders, etc. for operators in the test laboratory.

EMC

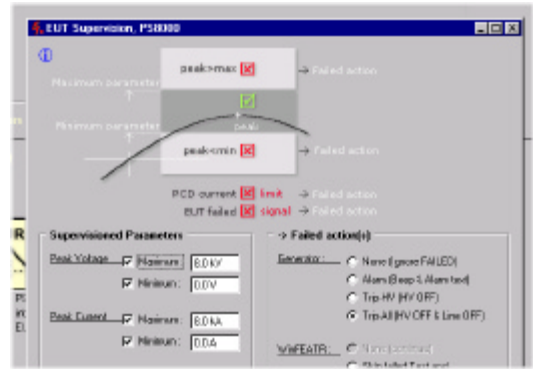


↑ Settings dialog based on **Standard configurations**.

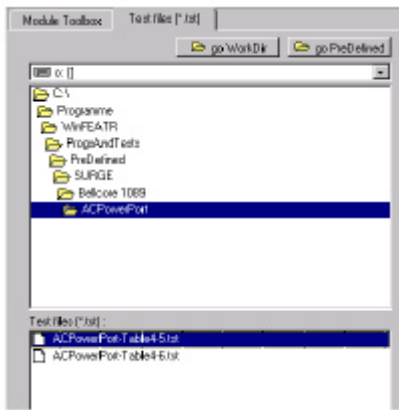
Configuration settings can be checked before a test is started with the **Preview Log** function. →



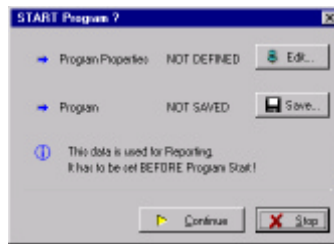
↑ **Comments and descriptions** can be easily linked to individual Programs or Tests for clear understanding and later recall.



↑ Integrated **EUT-supervision**.



← System pre-programmed **Standard Tests** for the most common requirements.



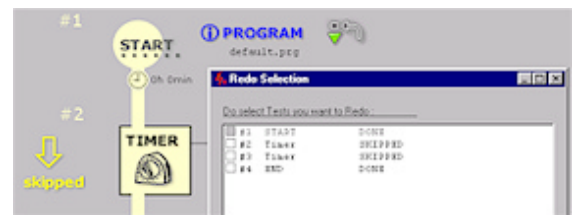
↑ Built-in **interactive warnings** to prevent incorrect configuration settings which could result in damage of EUT or generators.

← Reminder and **hint dialogs** to prevent loss of information or data.



← Built-in **"Redo"** functionality: Repeat single Tests out of a finished or running program. Safe additional re-testing time and nerves.

Just select the test(s) to be repeated out of the list and restart the program. →



SYSTEM REQUIREMENTS

- ❑ Microsoft Word2000 as report generator interface
- ❑ OS: Windows NT4.0, 98, ME, 2000
- ❑ 75MHz Pentium or higher processor
- ❑ Super VGA resolution or higher
- ❑ 32MB of RAM or more
- ❑ Available hard disk space 50MB
- ❑ CD-ROM drive and 3.5" Floppy drive
- ❑ GPIB interface (IEEE488) , any "National Instruments" (e.g. PC II / IIA / Plug and Play) or
- ❑ RS232 ports (one per tester)

ORDERING INFORMATION

WinFEATR software 249 970

The control software is also available as fully installed system with industrial PC.



Haefely Test AG
Business Unit EMC
 Lehenmattstrasse 353
 CH-4028 Basel / Switzerland
 Phone: ++ 41 61 373 41 11
 Fax: ++ 41 61 373 45 99
 email EMCsales@haefely.com