



ABN 43 064 478 842

➤ 231 osborne avenue clayton south, vic 3169  
PO box 1548, clayton south, vic 3169  
t 03 9265 7400 f 03 9558 0875  
freecall 1800 680 680  
[www.tmgtestequipment.com.au](http://www.tmgtestequipment.com.au)

## Test & Measurement

- sales
- rentals
- calibration
- repair
- disposal

## Complimentary Reference Material

This PDF has been made available as a complimentary service for you to assist in evaluating this model for your testing requirements.

TMG offers a wide range of test equipment solutions, from renting short to long term, buying refurbished and purchasing new. Financing options, such as Financial Rental, and Leasing are also available on application.

TMG will assist if you are unsure whether this model will suit your requirements.

Call TMG if you need to organise repair and/or calibrate your unit.

If you click on the “Click-to-Call” logo below, you can call us for FREE!

TMG Corporate Website

TMG Products Website



Click-to-Call  
TMG Now



### Disclaimer:

All trademarks appearing within this PDF are trademarks of their respective owners.



## At a glance

R&S®ES-SCAN is a cost-efficient and user-friendly 32-bit Windows software application that has been specially developed for the R&S®ESPI3 und R&S®ESPI7 precompliance test receivers. The main requirements of EMI measurements in accordance with commercial standards have been combined in an easy-to-use application: measurement settings and storage, scan data acquisition and display with automatic data reduction, peak search with acceptance limit and selection of subranges, final measurement with worst-case selection, report generation, and measurement data storage.

R&S®ES-SCAN offers all the advantages of a state-of-the-art software tool, including operation via keyboard and mouse, table editor, configurable report generation, and printout of reports

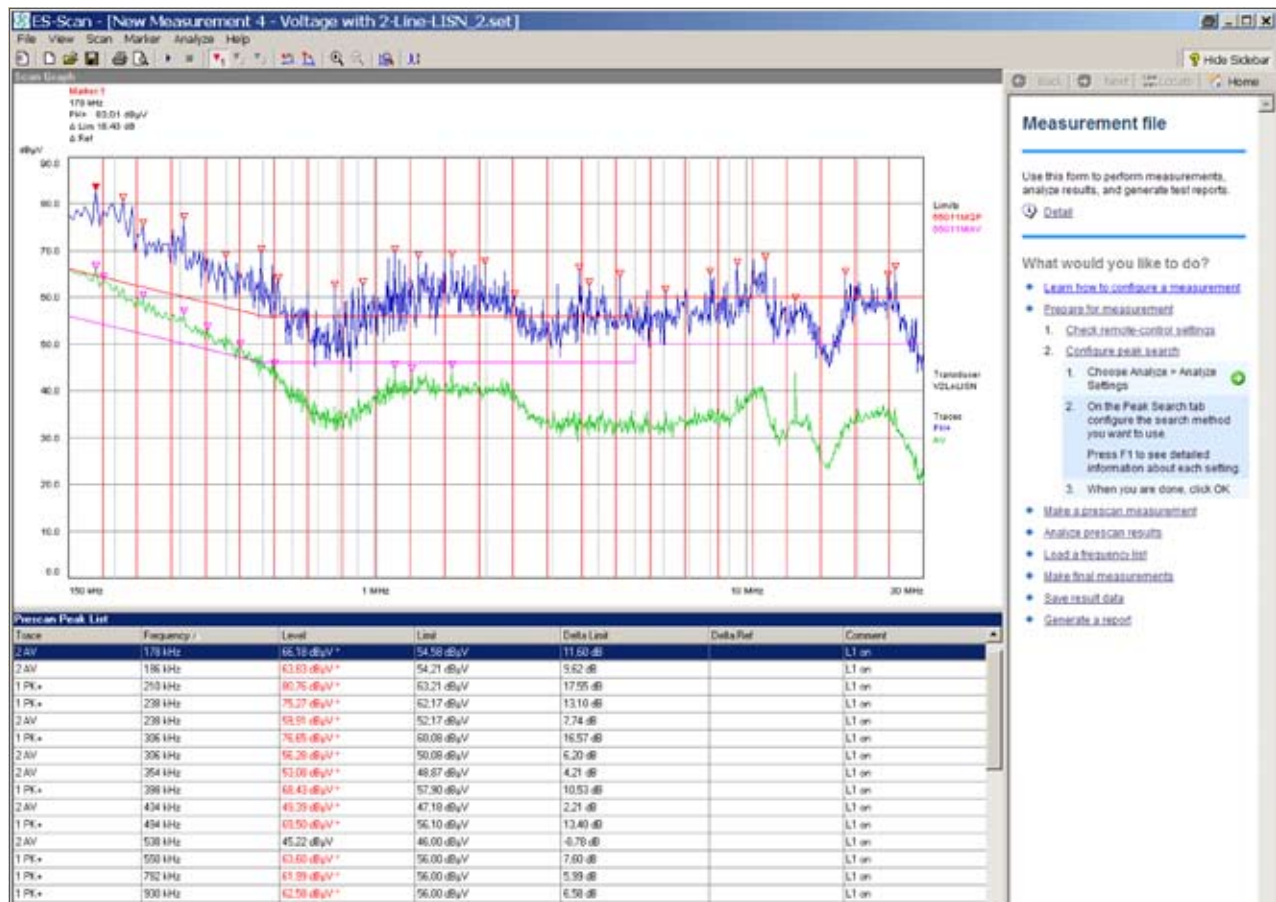
on any Windows printer. An assistant ("Help Side Bar") supports the user of the R&S®ES-SCAN EMI software at any stage of operation. Online help texts explain all software functions; an operating manual is therefore not required.

## Measurement settings

- ◆ Definition of any number of limit lines that are stored on the controller
- ◆ Library of standard limit lines for commercial standards included
- ◆ Definition of any number of receiver settings that are stored on the controller
- ◆ Definition and storage of a peak list for final measurements
- ◆ Loading of the new settings into the R&S®ESPI test receiver

## Scan mode and data acquisition

- ◆ Start, pause, and stop of the frequency scan by the controller
- ◆ "Marker to Peak" and "Tune Receiver to Marker Frequency" functions available for paused and completed frequency scan
- ◆ Continuation of a paused frequency scan with "Continue from Frequency" or "Continue from Pause"
- ◆ Zoom function after completion of frequency scan: zooming of the frequency axis for the detailed representation of a frequency subrange, centered to the marker position



Prescan measurement (Pk and Avg) with determination of local maxima (here 25 subranges) for subsequent final measurement (QP and Avg)

## Peak search function

- ◆ Automatic peak search with selectable acceptance limit and selectable number of frequency subranges or peak values
- ◆ Modification of peak list using "Add to Peak List" and "Delete from Peak List" functions
- ◆ Marking of peak list values in scan graphics and simultaneous display in tabular form

## Final measurement (Final Measurement Wizard)

- ◆ The user can choose between two modes:
  - Fully automatic measurement: processing of peak list and automatic level measurement at every frequency by means of the detectors defined in the measurement setup
  - Semi-automatic measurement (user-assisted): like automatic measurement, but with "Fine Tuning" function activated for every peak list frequency in order to find local maxima
- ◆ "Fine Tuning" function: level display on screen with current and maximum level value, continuous update during receiver fine tuning by the user, and, if required, setting of DUT position
- ◆ Transfer of measurement results to peak list by mouse click and display on screen
- ◆ Storage of all measurement results on controller

**Final Measurement Wizard**

**Configuration**  
Choose how you want the measurements to be made

☒ **User Assisted Measurement**  
Allows you to fine tune the frequency of each selected entry in the peak list before the final measurement is made.

☐ **Automatic Measurement**  
Makes a final measurement on each selected Peak List entry, using the listed frequencies.

☐ **Enter a comment with each measurement result**  
When ticked, the wizard pauses after each measurement to allow entry of a descriptive comment. When clear, the wizard proceeds immediately with the next Peak List entry. Measurements using a LISN are commented automatically.

☒ **Show 'Complete' page**  
When ticked, the wizard displays an extra page when all measurements are done.

Buttons: Cancel, < Back, Next >, Finish

*Selection between fully automatic and semi-automatic measurement mode in the "Final Measurement Wizard"*

**Final Measurement Wizard**

**Fine Tuning**  
Adjust the frequency to find the greatest level

**Readings**

	Level (PK+)	Level (QP)	Frequency	Peak Hold
Peak	37,31 dBμV	28,49 dBμV	9,32 kHz	Reset
Current	34,58 dBμV	26,95 dBμV	9,434 kHz	Goto Max

Level (PK+)

Level (QP)

Frequency Adjustment

Buttons: Settings..., Cancel, < Back, Next >, Finish

*"Fine Tuning" function with additional "Maximum Hold" display*

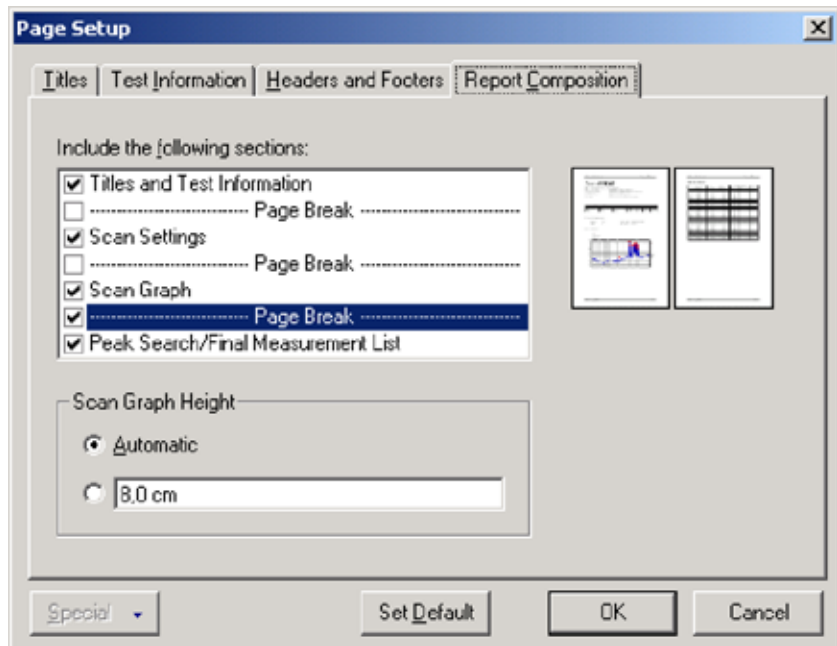


## Report

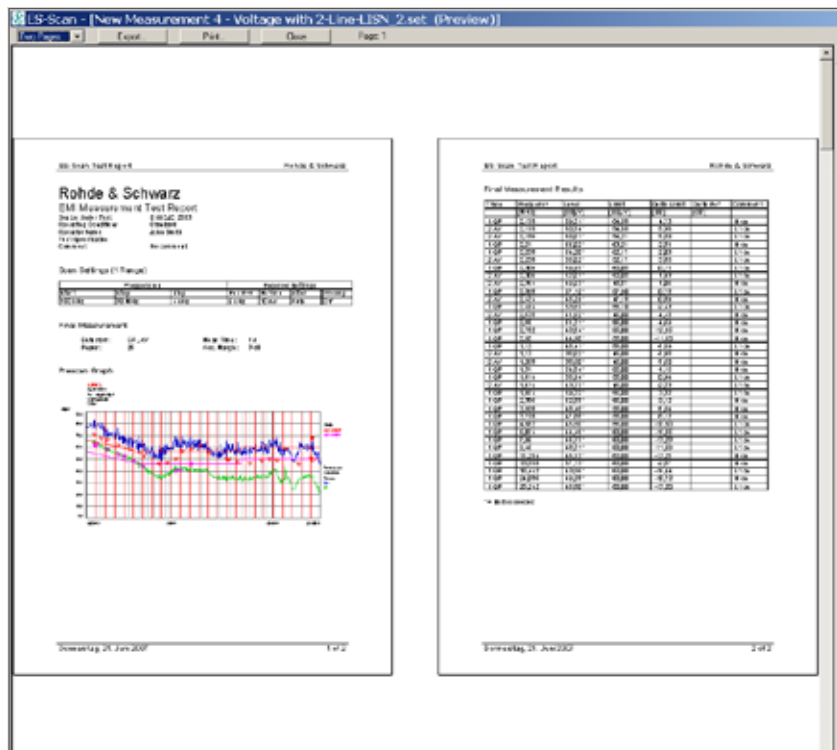
- ◆ Flexible report editor for different report layouts
- ◆ Report preview on screen
- ◆ Printout on a Windows-compatible printer

## System requirements

- ◆ Windows XP SP2 operating system
- ◆ Administrator rights (for installation)
- ◆ PC with Pentium processor (at least 600 MHz)
- ◆ 512 Mbyte RAM
- ◆ 20 Mbyte of available hard disk space
- ◆ Minimum screen resolution 640 × 480 pixels, 256 colors
- ◆ Ethernet connection for remote control via LAN (R&S®FSP-B16 required) or
- ◆ IEC/IEEE bus card and VISA software interface (from National Instruments)
- ◆ USB interface for hardlock copy protection



Definition of report layout



Preview function for test reports

## Ordering information

Designation	Type	Order No.
EMI Precompliance Software for R&S® ESPI Test Receiver (with hardlock copy protection)	R&S® ES-SCAN	1308.9270.02



More information at  
[www.rohde-schwarz.com](http://www.rohde-schwarz.com)  
(search term: ES-SCAN)



**ROHDE & SCHWARZ**

**[www.rohde-schwarz.com](http://www.rohde-schwarz.com)**

Europe: +49 1805 12 4242, [customersupport@rohde-schwarz.com](mailto:customersupport@rohde-schwarz.com)  
Americas: +1-888-837-8772, [customer.support@rsa.rohde-schwarz.com](mailto:customer.support@rsa.rohde-schwarz.com)  
Asia: +65 65 130 488, [customersupport.asia@rohde-schwarz.com](mailto:customersupport.asia@rohde-schwarz.com)