



ABN 43 064 478 842

➤ 231 osborne avenue clayton south, vic 3169  
PO box 1548, clayton south, vic 3169  
t 03 9265 7400 f 03 9558 0875  
freecall 1800 680 680  
[www.tmgtestequipment.com.au](http://www.tmgtestequipment.com.au)

## Test & Measurement

- sales
- rentals
- calibration
- repair
- disposal

## Complimentary Reference Material

This PDF has been made available as a complimentary service for you to assist in evaluating this model for your testing requirements.

TMG offers a wide range of test equipment solutions, from renting short to long term, buying refurbished and purchasing new. Financing options, such as Financial Rental, and Leasing are also available on application.

TMG will assist if you are unsure whether this model will suit your requirements.

Call TMG if you need to organise repair and/or calibrate your unit.

If you click on the “Click-to-Call” logo below, you can call us for FREE!

TMG Corporate Website

TMG Products Website



Click-to-Call  
TMG Now



### Disclaimer:

All trademarks appearing within this PDF are trademarks of their respective owners.



## 4 GHz Active Probes

► P7240 • P6249 • P6241 • P6209



Selecting the right probe for your application is key to attaining the best signal fidelity in your measurements. Active probes provide truer signal reproduction and fidelity for high frequency measurements. Tektronix provides you a wide range of 4 GHz active probes to select from for your application.

### **TekConnect® Interface - P7240**

The P7240 with TekConnect® interface is a high-performance active probe with high bandwidth and low capacitive loading to make it the probe of choice for demanding design applications, such as Rambus, DDR DRAM and AGP. This probe and others in the family are also suited for applications in the communication industry, for measurements on Fibre Channel and Gigabit Ethernet. With the TekConnect interface, you can be assured that maximum signal integrity is maintained to meet present and future bandwidth needs.



### **TEKPROBE® BNC Interface - P6249 and P6241**

The P6249 and P6241 have similar performances to the P7240. Primarily used for the TDS694C and TDS794D performance oscilloscopes, these probes may also be used with conventional BNC interfaces via the Tektronix 1103 TEKPROBE® Power Supply. The P6249 provides 4 V<sub>p-p</sub> dynamic range. The P6241 offers a 10X attenuation and an 8 V<sub>p-p</sub> dynamic range, plus has a lower input capacitance due to the unique probe tip. A full complement of versatile probe tip accessories helps users connect to the wide range of devices faced by digital designers.

### ► Features & Benefits

- <120 ps Rise Time (Guaranteed)
- 4 GHz Bandwidth
- <0.5 pF Input Capacitance (P6241 Only)
- Small Form Factor Probe Head
- 8 V<sub>p-p</sub> Dynamic Range (P6241 Only)
- Direct Access to SMDs
- Oscilloscopes Supported
  - P7240 TDS/CSA7000 Series
  - P6249 TDS/CSA7000, 6000, 700, 600 Series
  - P6241 TDS/CSA7000, 6000, 700, 600 Series
  - P6209 CSA/TDS8000, TDS800 Series
- Probe Interfaces
  - P7240 TekConnect® Interface
  - P6249 TEKPROBE® II BNC Interface
  - P6241 TEKPROBE II BNC Interface
  - P6209 TEKPROBE SMA Interface

### ► Applications

- High-speed Digital Systems Design
- Component Design/Characterization
- Signal Integrity, Jitter and Timing Analysis
- Manufacturing Engineering and Test
- Signals with Voltage Swings up to 8 V<sub>p-p</sub>
- Measures 3.0 V Logic, InfiniBand, PCI Express, DDR, Rambus Data Lines, Gigabit Ethernet

COMPUTING

COMMUNICATIONS

VIDEO

## 4 GHz Active Probes

► P7240 • P6249 • P6241 • P6209

### SMA Interface/Sampling Oscilloscopes - P6209

The P6209 provides a high-bandwidth, low circuit loading probing solution for the CSA/TDS8000B sampling oscilloscopes with TEKPROBE™ SMA input connection. Based on the P6249 probe design, the P6209 has similar performance and a similar small probe head for access to today's fine-pitch SMDs and connection points.

### ► Characteristics

#### ► Model

	P7240	P6249	P6209
Rise Time	<120 ps	<120 ps	<120 ps
Bandwidth	4.0 GHz	4.0 GHz	4.0 GHz
Attenuation	5X	5X	5X
DC Resistance	20 kΩ	20 kΩ	20 kΩ
Input Capacitance	<1 pF	<1 pF	<1 pF
Dynamic Range	±2 V	±2 V	±2 V
Offset Range	±5 V	±5 V	±5 V
Interface	TekConnect®	TEKPROBE® II	TEKPROBE SMA

#### ► Model

	P6241
Rise Time	<120 ps
Bandwidth	4.0 GHz
Attenuation	10X
DC Resistance	40 kΩ
Input Capacitance	<0.5 pF
Dynamic Range	±4 V
Offset Range	±10 V
Interface	TEKPROBE II

### ► Ordering Information

#### P7240

4.0 GHz Active Probe.

#### P6249

4.0 GHz Active Probe.

#### P6241

4.0 GHz Active Probe.

#### P6209

4.0 GHz Active Probe.

**Warranty** – One year.

**User Manuals** –

P7240: Order 071-0759-xx.

P6249: Order 071-0538-xx.

P6241: Order 071-1188-xx.

P6209: Order 071-0634-xx.

## 4 GHz Active Probes

► P7240 • P6249 • P6241 • P6209

### ► Included Accessories

Product Name/ Description	P6241 Part Number	Quantity	P7240/P6249/P6209 Part Number	Quantity
3 In. Ground Leads (Set of 2)	196-3437-10	1		
Customizable Ground Lead (Set of 5)	196-3482-00	1	196-3482-00	1
Lead Set: 196-3437-00 (Set of 3) 196-3457-00 (Set of 2)		1 1	196-3456-00	1
Y Lead Adapter	196-3434-00	2		
L Adapter (Set of 2)	016-1913-00	1		
Adapter Spring (Set of 10)			016-1774-00	1
SMT KlipChip™ Adapter	206-0364-01	2	206-0364-01	2
Short Pogo Pin Ground (Set of 8)	016-1917-00	1		
Pogo Pin (Set of 10)			016-1772-xx	1
Square Pin Socket (Set of 10)			016-1773-xx	1
Square Pin Adapter (Set of 4)	016-1910-01	1		
Probe Tip (Set of 30)			131-5638-30	1
Color Coding Bands, 2 Each of 5 Colors	016-1315-00	1	016-1315-00	1
Probe Carrying Case	016-1879-01	1	016-1879-01	1
Accessory Case	006-7164-00	1	016-7164-00	1
Wrist Strap	006-3415-04	1	006-3415-04	1
SureToe™ (Set of 12)	ST501 (Replacement Pkg of 12)	1	ST501 (Replacement Pkg of 12)	1

### ► Recommended Accessories

Product Name/ Description	P6241 Part Number	Quantity	P7240/P6249/P6209 Part Number	Quantity
SMK4 – IC Grabber (Set of 2)	013-0309-00	1	013-0309-00	1
SureFoot®, 50 mil (Set of 12)			SF501	1
SureFoot, 25 mil (Set of 12)			SF502	1
SureFoot, 0.5 mil (Set of 12)			SF503	1

### Support Options

**Opt. C3** – Calibration Service 3 Years.

**Opt. C5** – Calibration Service 5 Years.

**Opt. D1** – Calibration Data Report.

**Opt. D3** – Calibration Data Report 3 Years  
(with Option C3).

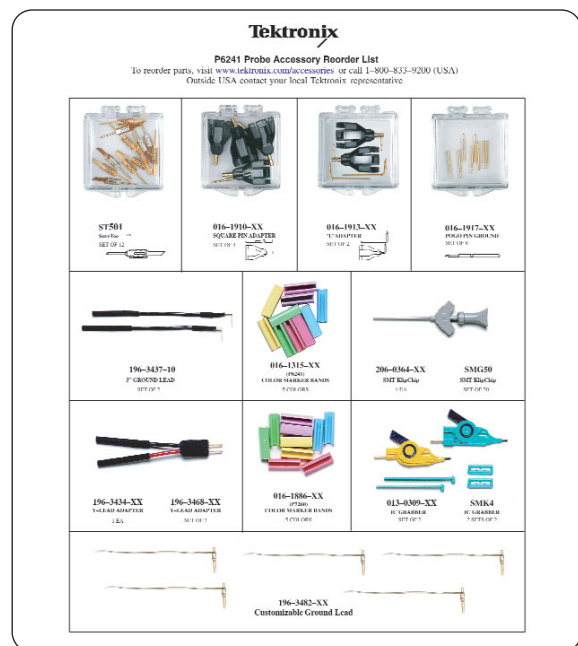
**Opt. D5** – Calibration Data Report 5 Years  
(with Option C5).

**Opt. R3** – Repair Service 3 Years.

**Opt. R5** – Repair Service 5 Years.

## 4 GHz Active Probes

► P7240 • P6249 • P6241 • P6209



## Contact Tektronix:

ASEAN / Australasia / Pakistan (65) 6356 3900

Austria +43 2236 8092 262

Belgium +32 (2) 715 89 70

Brazil & South America 55 (11) 3741-8360

Canada 1 (800) 661-5625

Central Europe & Greece +43 2236 8092 301

Denmark +45 44 850 700

Finland +358 (9) 4783 400

France & North Africa +33 (0) 1 69 86 80 34

Germany +49 (221) 94 77 400

Hong Kong (852) 2585-6688

India (91) 80-22275577

Italy +39 (02) 25086 1

Japan 81 (3) 6714-3010

Mexico, Central America & Caribbean 52 (55) 56666-333

The Netherlands +31 (0) 23 569 5555

Norway +47 22 07 07 00

People's Republic of China 86 (10) 6235 1230

Poland +48 (0) 22 521 53 40

Republic of Korea 82 (2) 528-5299

Russia, CIS & The Baltics +358 (9) 4783 400

South Africa +27 11 254 8360

Spain +34 (91) 372 6055

Sweden +46 8 477 6503/4

Taiwan 886 (2) 2722-9622

United Kingdom & Eire +44 (0) 1344 392400

USA 1 (800) 426-2200

USA (Export Sales) 1 (503) 627-1916

For other areas contact Tektronix, Inc. at: 1 (503) 627-7111

Last Update March 01, 2004

Our most up-to-date product information is available at:  
[www.tektronix.com](http://www.tektronix.com)

Product(s) are manufactured  
in ISO registered facilities.



Copyright © 2004, Tektronix, Inc. All rights reserved. Tektronix products are covered by U.S. and foreign patents, issued and pending. Information in this publication supersedes that in all previously published material. Specification and price change privileges reserved. TEKTRONIX and TEK are registered trademarks of Tektronix, Inc. All other trade names referenced are the service marks, trademarks or registered trademarks of their respective companies.

04/04 HB/WWW

60W-13145-4