



ABN 43 064 478 842

> 231 osborne avenue clayton south, vic 3169
PO box 1548, clayton south, vic 3169
t 03 9265 7400 f 03 9558 0875
freecall 1800 680 680
www.tmgtestequipment.com.au

Test & Measurement

- > sales
- > rentals
- > calibration
- > repair
- > disposal

Complimentary Reference Material

This PDF has been made available as a complimentary service for you to assist in evaluating this model for your testing requirements.

TMG offers a wide range of test equipment solutions, from renting short to long term, buying refurbished and purchasing new. Financing options, such as Financial Rental, and Leasing are also available on application.

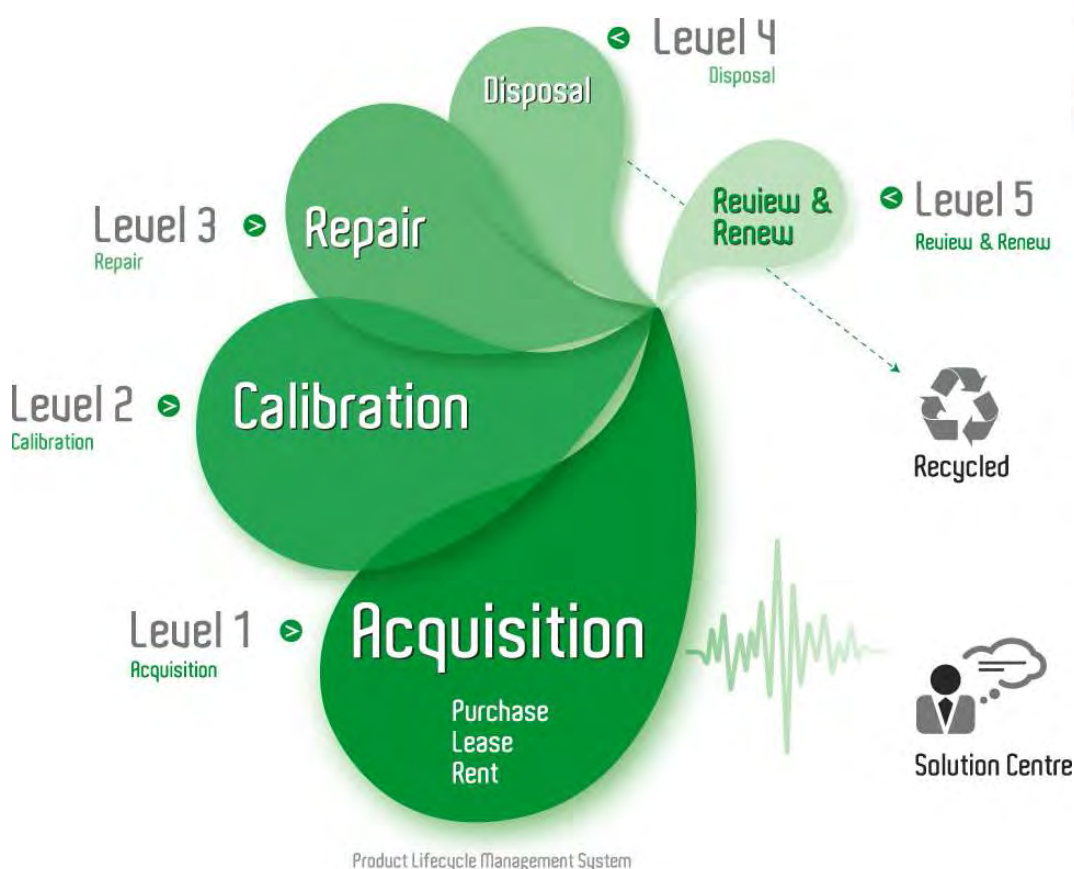
TMG will assist if you are unsure whether this model will suit your requirements.

Call TMG if you need to organise repair and/or calibrate your unit.

If you click on the "Click-to-Call" logo below, you can call us for FREE!

TMG Corporate Website

TMG Products Website



Disclaimer:

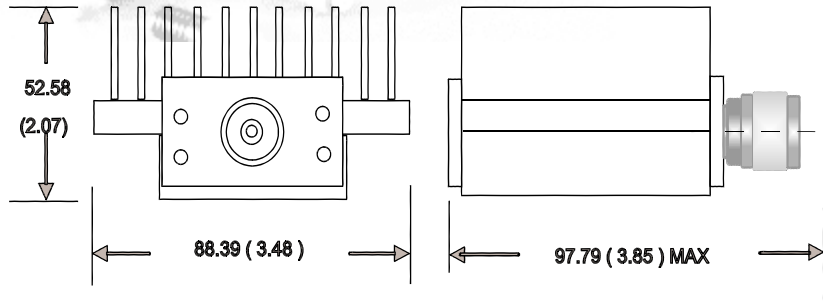
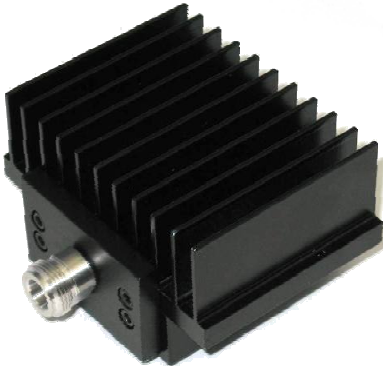
All trademarks appearing within this PDF are trademarks of their respective owners.

TERMINATION

MODEL WA1429

DC – 8.5 GHz

75 WATTS



Features

Type N, SMA or DIN 7/16 stainless steel M/F connectors per MIL-STD-348A, interface dimensions mate non-destructively with MIL-PRF-39012. Designed to meet MIL-DTL-39030 environmental specification. Unit may be mounted in any position.

Specifications

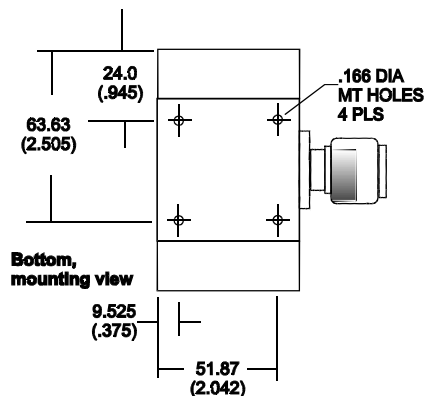
Nominal Impedance: 50 ohms

Frequency Range: DC - 8.5 GHz

Power Rating: 75 watts average. Maximum rated average power to 25°C ambient temperature, de-rated linearly to 10 watts at 125°C. 5 kilowatt peak (5 µsec pulse width; 1.5% duty cycle).

Temperature Range: -55°C to +125°C

Mounting Holes:



Construction: Black aluminum alloy body with passivated stainless steel connectors. Gold-plated beryllium copper female contact, stainless steel or gold-plated beryllium copper male contact.

Calibration: VSWR performed across frequency range. Calibration test data available at additional cost.

Maximum VSWR:

Frequency (GHz)	VSWR
DC - 4.0	1.20
4.0 - 8.5	1.30

Length:

Connector	Length
Type N	97.79 (3.85)
SMA	89.31 (3.52)

Width: 89.0 (3.5)

Height: 53.0 (2.1)

Weight:

Type N	1.5 kg/ 3.3 lb
SMA	1.3 kg/ 3.0 lb

Note: Dimensions are given in mm (inches) and are maximum, unless otherwise specified.



WEINSCHTEL ASSOCIATES

TEL: 877.948.8342 / 301.963.4630 ♦ Fax: 301.963.8640

WEB: <http://www.WeinschelAssociates.com>

EMAIL: sales@WeinschelAssociates.com