



ABN 43 064 478 842

> 231 osborne avenue clayton south, vic 3169  
PO box 1548, clayton south, vic 3169  
t 03 9265 7400 f 03 9558 0875  
freecall 1800 680 680  
[www.tmgtestequipment.com.au](http://www.tmgtestequipment.com.au)

## Test & Measurement

- > sales
- > rentals
- > calibration
- > repair
- > disposal

## Complimentary Reference Material

This PDF has been made available as a complimentary service for you to assist in evaluating this model for your testing requirements.

TMG offers a wide range of test equipment solutions, from renting short to long term, buying refurbished and purchasing new. Financing options, such as Financial Rental, and Leasing are also available on application.

TMG will assist if you are unsure whether this model will suit your requirements.

Call TMG if you need to organise repair and/or calibrate your unit.

If you click on the "Click-to-Call" logo below, you can call us for FREE!

TMG Corporate Website

TMG Products Website



### Disclaimer:

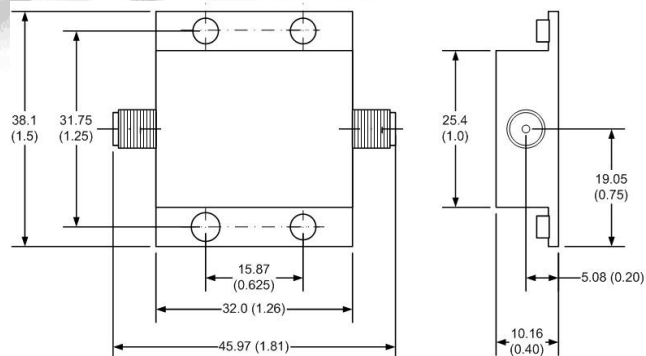
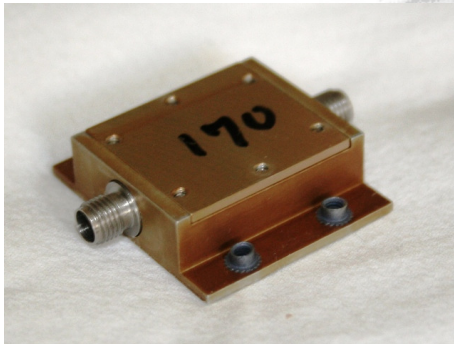
All trademarks appearing within this PDF are trademarks of their respective owners.

# Fixed Coaxial Attenuator Low-Profile/Flange Mount

## MODEL WA200271

DC – 3.0 GHz

10 WATTS



### Features

SMA, stainless steel, F/F connectors per MIL-STD-348A, interface dimensions mate nondestructively per MIL-PRF-39012.

Designed and tested to meet the standards of MIL-DTL-3933. Additional dB values available upon request.

### Specifications

**Nominal Impedance:** 50 ohms.

**Frequency Range:** DC – 3.0 GHz.

**Power Sensitivity:** < 0.0005 dB/dB/W;  
Bidirectional in power.

**Power Rating (over temperature):**

10 W CW

800 W pk, 33 microsec pulse width, 1%  
Duty Cycle.

1.8 kW pk, 1 microsec pulse width, .025%  
Duty Cycle.

**Standard Nominal Values and Deviations:**

Attenuation (dB)	Accuracy ± dB
	DC – 3.0 GHz
3	0.25

**Temperature Range:**

-65°C to +125°C, Storage.

-54°C to +95°C, Operating.

**Temperature Coefficient:** < 0.0004 dB/dB/°C

**Construction:** Gold Iridite aluminum alloy body with passivated stainless steel connectors. Gold plated beryllium copper contacts.

**Calibration:** Insertion Loss and VSWR performed across frequency range. Calibration test data available at additional cost.

**Maximum VSWR:**

Frequency (GHz)	VSWR 3 dB
DC – 3.0	1.40

**Weight:** 0.14 kg/5 oz max.

**Physical Dimensions:**

45.97 x 38.1 x 10.16 mm.

1.81 x 1.50 x 0.40 inches.

**Mounting:** Flange mount with four (4) 4-40 self-clinching fasteners.

Note: Dimensions are given in mm (inches) and are maximum, unless otherwise specified



## WEINSCHTEL ASSOCIATES

TEL: 877.948.8342 / 301.963.4630 ♦ Fax: 301.963.8640

WEB: <http://www.WeinschelAssociates.com>

EMAIL: [sales@WeinschelAssociates.com](mailto:sales@WeinschelAssociates.com)

70

Specification  
Subject to change  
without notice