



ABN 43 064 478 842

➤ 231 osborne avenue clayton south, vic 3169
PO box 1548, clayton south, vic 3169
t 03 9265 7400 f 03 9558 0875
freecall 1800 680 680
www.tmgtestequipment.com.au

Test & Measurement

- sales
- rentals
- calibration
- repair
- disposal

Complimentary Reference Material

This PDF has been made available as a complimentary service for you to assist in evaluating this model for your testing requirements.

TMG offers a wide range of test equipment solutions, from renting short to long term, buying refurbished and purchasing new. Financing options, such as Financial Rental, and Leasing are also available on application.

TMG will assist if you are unsure whether this model will suit your requirements.

Call TMG if you need to organise repair and/or calibrate your unit.

If you click on the “Click-to-Call” logo below, you can call us for FREE!

TMG Corporate Website

TMG Products Website



Click-to-Call
TMG Now



Disclaimer:

All trademarks appearing within this PDF are trademarks of their respective owners.

VTM 15000

Impulse Transformer for Insulation Testing

■ **The VTM 15000** is used for insulation testing with 1.2/50us voltage impulses.

The VTM 15000 runs together with a combination wave generator such as PIM 100 or PSURGE 4010. The output voltage of the generator is doubled, the voltage wave shape remains the same. The current wave shape is not defined any more.

For insulation testing a VTM 15000 and a combination wave generator can be used. The lightning impulse is the most common impulse shape for testing insulations. No flash over should occur during testing.

It is important to keep the load capacitance below the given maximum for having a proper impulse shape at the output of the VTM 15000. When the maximum load capacitance is exceeded one or more impulse parameters may be out of tolerance.

The PSURGE 8000 Surge Platform and the PSURGE 4010 combination wave generator provide all the programming functions required to perform IEC, ANSI and UL testing also without the need of a control computer.

The generators are integrated in the WinFEAT&R **control and reporting software** package. This enhances an efficient set-up and operation of this test system.



■ Features

- ☑ 1.2/50us voltage impulse
- ☑ output amplitude up to 15kV
- ☑ Source impedances 12 Ohm, 40 Ohm and 500 Ohm
- ☑ Separate Output for each source impedance
- ☑ floating output

■ Benefits

International application – Specifically designed to meet and exceed the requirements of:

- IEC 60060-1
- IEC 60335-1
- IEC 61010-1
- IEC 61180-1
- IEC 61008-1 and 61009-1

Safe and Easy - The HV output provides the HV impulse with a large insulation distance to the front panel. The pig tail cable for the HIGH is double insulated. This allows operators to handle the EUTs and test them safely and easily.

Sturdy and Reliable – Careful component selection ensures that the VTM 15000 will continue to operate under the most strenuous testing regimen.

Supervision - The peak voltage and peak current into the VTM 15000 can be monitored. If the user set limits are exceeded, an alarm is given.

Report Generation - The unit controller can automatically generate test reports without a computer. Add the WinFEAT&R control and reporting software on a host PC in order to collect and collate data in any format you like.

■ Applications

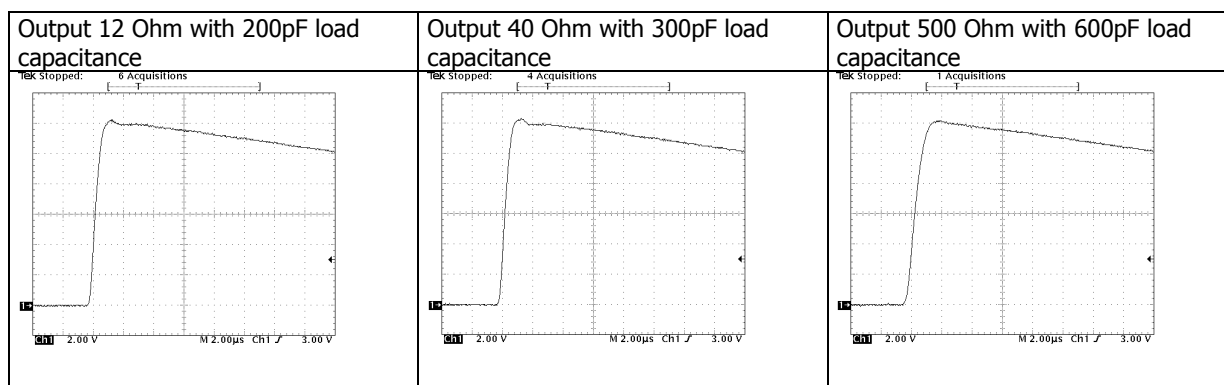
- ☑ Insulations
- ☑ Creepage distances
- ☑ Clearances
- ☑ Many IEC, ANSI, UL & EN Product standards
- ☑ Other international requirements for voltage impulses

■ Technical Specifications

Turns Ratio	1:2	
Impulse shape	1.2 μ s / 50 μ s	voltage impulse (lightning impulse)
Output impedances	12 Ohm	Load capacitance \leq 200pF, Load resistance \geq 5kOhm
	40 Ohm	Load capacitance \leq 300pF, Load resistance \geq 5kOhm
	500 Ohm	Load capacitance \leq 600pF, Load resistance \geq 50kOhm
Output Voltage	up to 15kV	with a 7.5kV source, e.g. PIM 100
	up to 8.4kV	with a 4.2kV source, e.g. PSURGE 4010 or ECOMPACT 4
Impulse Output	HIGH	Haefely HV sockets
	COMMON	safety banana socket
	Protection earth	terminal with 4mm banana socket

Weights and Dimensions (W x H x D, net weight)

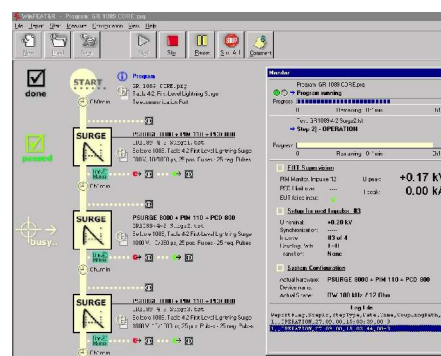
VTM 15000 45 x 15 x 57 cm approx. 15 kg (23 lbs)



■ VTM 15000 Art. No. 249996 Scope of supply

- Qty. 1 VTM 15000 Impulse Transformer
- Qty. 1 HV cable for the HIGH output
- Qty. 1 HV cable for the COMMON output
- Qty. 1 Cable for protection earth
- Qty. 1 Users Manual

WinFEAT&R Control Window



■ Options and Accessories

- PSURGE 8000 Surge Platform Mainframe
- PIM 100 Impulse module Combination wave 1.2/50 μ s - 8/20 μ s
- PSURGE 4010 Impulse generator Combination wave 1.2/50 μ s - 8/20 μ s
- WinFEAT&R Control and reporting software. Runs under Windows 98, NT, ME, 2000, XP
- ECOMPACT 4 Compact tester up to 4.2kV

Headquarters
Haefely Test AG
 Lehenmattstrasse 353
 CH-4052, Basel
 Switzerland

+41 61 373 41 11
 +41 61 373 45 99
EMC-sales@haefely.com

Locate your local
 sales representative at
www.haefelyEMC.com



HAEFELY EMC
 TECHNOLOGY

North American Office
Hipotronics Inc.
Haefely EMC Division
 1650 Route 22
 Brewster, NY 10509

+1 845 279 3644 x264
 +1 845 279 2467

EMCsales@hubbell-haefely.com