



ABN 43 064 478 842

231 Osborne Avenue Clayton South, VIC 3169
PO Box 1548, Clayton South, VIC 3169
t 03 9265 7400 f 03 9558 0875
freecall 1800 680 680
www.tmgtestequipment.com.au

Test & Measurement

- > sales
- > rentals
- > calibration
- > repair
- > disposal

Complimentary Reference Material

This PDF has been made available as a complimentary service for you to assist in evaluating this model for your testing requirements.

TMG offers a wide range of test equipment solutions, from renting short to long term, buying refurbished and purchasing new. Financing options, such as Financial Rental, and Leasing are also available on application.

TMG will assist if you are unsure whether this model will suit your requirements.

Call TMG if you need to organise repair and/or calibrate your unit.

If you click on the "Click-to-Call" logo below, you can call us for FREE!

TMG Corporate Website

TMG Products Website



Click-to-Call
TMG Now



Product Lifecycle Management System

Disclaimer:

All trademarks appearing within this PDF are trademarks of their respective owners.



DC – 13.0 GHz

0.3 WATTS

Overview

The DA Series of Digital Attenuators represents the latest in programmable attenuator technology. The DA Series combines the rugged design and superior performance that comes standard with Weinschel Associates products with modern innovations to achieve new levels of ease of integration and price performance.

The DA Series is ideal for a multitude of applications including:

- Test Instrumentation
- Base Station Infrastructure
- Broadband Telecommunications
- Microwave and VSAT Radios
- Military

Features

- Broadband Frequency Coverage
- High Accuracy and Repeatability
- Easy Programmability
 - USB Interface
 - Software Driver/Application
- Rugged Construction

Specifications

Frequency Range: DC - 13.0 GHz

Attenuation Range:

Model DA13-30:	30 dB
Model DA13-60:	60 dB
Model DA13-90:	90 dB

Step Size: 0.5 dB

Insertion Loss (max):

Model	Insertion Loss vs Freq (GHz)		
	DC – 4	4 – 8	8 – 13
DA13-30	4.0	5.0	6.0
DA13-60	8.0	10.0	12.0
DA13-90	12.0	15.0	18.0

VSWR (max): 1.50:1

Accuracy: ± 0.5 dB Typical

Switching Speed: <100 ns

Input power for 0.1 dB Compression: +22 dBm

Input Third Order Intercept Point: +32 dBm

Power Rating: 0.3 Watt CW, +25 dBm max

Phase Shift with Change in Attenuation:
1° / dB x f (GHz) maximum

Temperature:

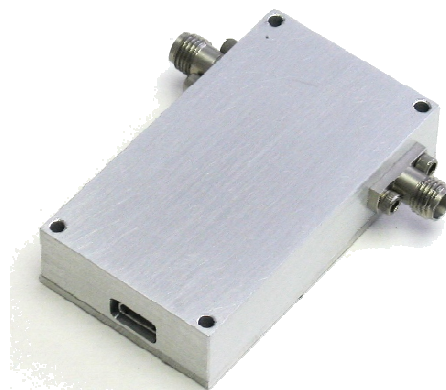
Operating: -55 to + 85 °C
Storage: -60 to +125 °C

Connectors: SMA stainless steel M/F connectors per MIL-STD-348A, interface dimensions mate nondestructively with MIL-C-39012.

Programming Interface:

Options: USB-2.0 (standard)
RS-232
802.11g Wireless
Manual Control
Software: LabView Driver
Standalone Program

Input Power Requirement: Powered via USB
Options: AC Power Adapter
EMI Feedthru



WEINSCHEL ASSOCIATES

TEL: 877.948.8342 / 301.963.4630 ♦ Fax: 301.963.8640

WEB: <http://www.WeinschelAssociates.com>

EMAIL: sales@WeinschelAssociates.com