



ABN 43 064 478 842

231 Osborne Avenue Clayton South, VIC 3169  
PO Box 1548, Clayton South, VIC 3169  
t 03 9265 7400 f 03 9558 0875  
freecall 1800 680 680  
www.tmgtestequipment.com.au

## Test & Measurement

- > sales
- > rentals
- > calibration
- > repair
- > disposal

## Complimentary Reference Material

This PDF has been made available as a complimentary service for you to assist in evaluating this model for your testing requirements.

TMG offers a wide range of test equipment solutions, from renting short to long term, buying refurbished and purchasing new. Financing options, such as Financial Rental, and Leasing are also available on application.

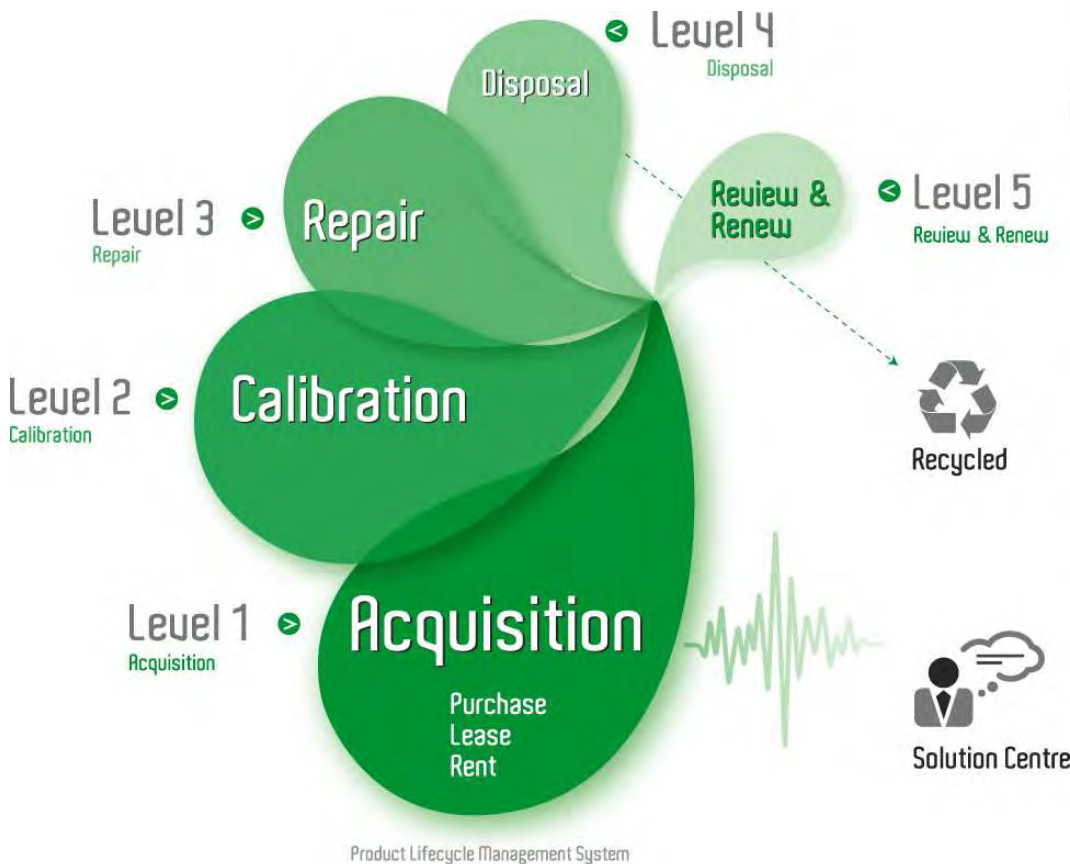
TMG will assist if you are unsure whether this model will suit your requirements.

Call TMG if you need to organise repair and/or calibrate your unit.

If you click on the "Click-to-Call" logo below, you can call us for FREE!

TMG Corporate Website

TMG Products Website



### Disclaimer:

All trademarks appearing within this PDF are trademarks of their respective owners.

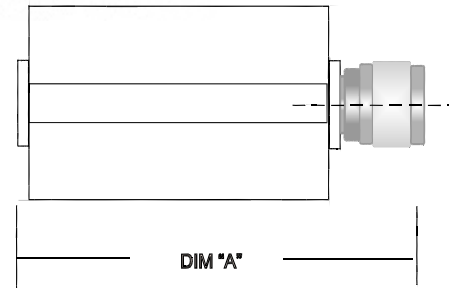
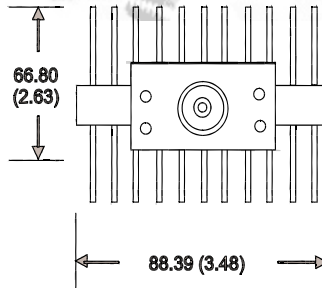
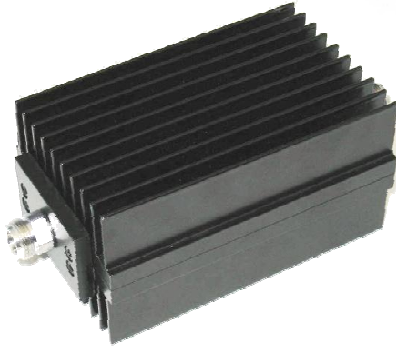


# TERMINATION

# MODEL WA1428

DC – 2.5 GHz

150 WATTS



Model WA1428-3 shown

## Features

Type N, SMA, or DIN 7/16 stainless steel M/F connectors per MIL-STD-348A, interface dimensions mate nondestructively with MIL-PRF-39012. Designed to meet MIL-DTL-39030 environmental specification. Unit may be mounted in any position.

## Specifications

**Nominal Impedance:** 50 ohms

**Frequency Range:** DC - 2.5 GHz

**Power Rating:** 150W CW / 10 KW peak. Full power from -55°C to +25°C; derated linearly to 15 Watts at 125°C.

**Temperature Range:** -55°C to +125°C

**Calibration:** VSWR performed across frequency range. Calibration test data available at additional cost.

**Construction:** Black aluminum alloy body with passivated stainless steel connectors.

**Maximum VSWR:**

Frequency (GHz)	VSWR
DC - 1.5	1.10
1.5 - 2.5	1.20

**Physical Dimensions:**

**Length and Weight:**

Connector Type	Dim "A"	Weight kg/lb
N F WA1428-3	144.78 (5.70)	1.13/2.5
N M WA1428-4	152.90 (6.02)	1.13/2.5
7/16 F WA1428-8	177.80 (7.00)	1.22/2.7
7/16 M WA1428-9	178.82 (7.04)	1.25/2.75

Note: Dimensions are given in mm (inches) and are maximum, unless otherwise specified.



## WEINSCHEL ASSOCIATES

TEL: 877.948.8342 / 301.963.4630 ♦ Fax: 301.963.8640

WEB: <http://www.WeinschelAssociates.com>

EMAIL: [sales@WeinschelAssociates.com](mailto:sales@WeinschelAssociates.com)