



Enterprise / IT Test Catalogue

> freecall 1800 626 500

www.tmgtestequipment.com.au

> Ethernet Testing	1
> Fusion Splicers	2
> LAN Cable Testing	3
> Multi-Function Test Sets	3
> Optical Fibre Inspection	4
> Optical Light Source	5
> Optical Power Meters	6
> Optical Time Domain Reflectometer (OTDR)	7
> Probe Microscopes and Displays	8
> Software	8
> Visual Fault Locators	8



JDSU

Certifier40G Cable Certifier



JDSU

FIT-S105 Fibre Essentials Toolkit



SUMITOMO ELECTRIC

TuffCat Type-66 Mass Fusion Splicer



JDSU

SmartClass Ethernet Test Set

Product Index

JDSU

C1004	Dual Port (one port 10M-10G, one port 10M-4G) MSAM	1
Certifier40G	Next-Generation Cable Certifier	3
CSC-ETHTR	SmartClass Ethernet (10/100/1000 and Gig-E) Services Testing	1
E4123MM	Multimode 850/1300 OTDR Module	7
E4146QUAD	Multimode / Singlemode 850/1300/1310/1550 NM OTDR	7
E8111SRL	Short Range LAN 24dB Multimode 850nm OTDR plug-in	7
E8123SRL	Short Range LAN 24/24dB Multimode 850/1300 nm OTDR plug-in	8
EOFS100	Optical Fiber Trace Software	8
FBP-SD01	P5000 Digital Probe and FiberChek2 Advanced Kit	4
FBP-SM05	INSPECTION KIT – 200/400X FBP PROBE W/HD3-P4 DISPLAY	5
FFL-100	VFL - RUGGEDIZED - 2.5MM & 1.25MM	9
FIT-S105-AU-PRO	FIBER ESSENTIALS TOOL KIT - AU	8
HST3000-ETH-P3	Optical Ethernet Gold Package	1
MP-80A	USB Optical Power Meter-High Power: With Software and Acc.	6
MTS-4000	All-in-one Access/FTTx/Triple-Play Services Test Set	3
MTS4-DIS-LANOPMVFL	MTS-4000 Multiple Services Test Platform with Enterprise Services Application Module (ESAM)	2
MTS-6000	Compact Optical Test Platform	4
MTS-6000A	Compact Network Test Platform	4
NT1155	ValidatorPRO-NT Ethernet speed certifier	3
OLP-34	OLP-34 Optical Power meter, Ge, with USB	6
OLS-34	OLS-34, LED Source, 850/1300nm	5

Sumitomo

Type-39	Dual Heater Core Alignment Splicer	2
---------	------------------------------------	---

Ethernet Testing



C1004

Dual Port (one port 10M-10G, one port 10M-4G) MSAM



- Dual port (one port 10 Mb/s to 10 Gb/s, one port 10 Mb/s to 2.5 Gb/s) Module
- Modular form factor enables field upgrade of test capabilities by adding or replacing Physical Interface Modules and optics
- Multi-service capability allows simultaneous Ethernet and SONET/SDH testing
- Performs two independent tests in parallel with dual-port chassis
- Provides support for VLAN, Q-in-Q, VPLS, MPLS Tunnelling applications, and IP

Works in conjunction with the MTS-6000A



CSC-ETHTR

SmartClass Ethernet (10/100/1000 and Gig-E) Services Testing



The SmartClass Ethernet product is an easy to use, cost effective Ethernet testing solution for basic physical layer cable testing, layer 2 and layer 3 traffic generation, and full RFC 2544 testing. The rugged, battery operated, application specific test tool enables field technicians to turn-up Ethernet and IP services by running an RFC 2544 test or following a set of methods and procedures. The product has been designed for front-line technicians who do not have experience dealing with emerging Metro Ethernet technologies and need a simple to use solution for Ethernet and IP testing. The SmartClass product comes in two major configurations, one a loopback only device and the other featuring full traffic generation.

Units can be configured with copper or copper and fibre. Loopback only units also available



HST3000-ETH-P3

Optical Ethernet Gold Package



- Support for Electrical and Optical Ethernet testing in a single module.
- IPv6 option to enable installation and troubleshooting of IPv6 networks.
- Modular hardware and software architecture is flexible and easily upgraded in the field.
- Supports Triple Play and FTTX testing, as well as TDM network testing.
- Future-proof solution for circuit-switch to packet-switch migration.
- Fully configurable - buy only what you need now, easily upgrade as needs change.
- Rugged, hand-held platform ideal for field use.
- Ability to perform traffic generation up to interface line rate and support automated RFC2544 at Layers 2 to 4 (Eth/IP/TCP/UDP).
- Ability to generate and analyse traffic with various encapsulation schemes such as VLAN, VLAN Stacking (Q-in-Q), and MPLS.
- PPPoE protocol support for emulation of data traffic in the last mile.
- GigE and 10/100 Ethernet - Generate traffic and troubleshoot Ethernet links, both optical and electrical, for point to point or routed networks.

Portable test set addressing the needs of Layer 1 through Layer 7 testing with IPv6 compatibility, RFC 2544 testing

MTS-4000 Multiple Services Test Platform with Enterprise Services Application Module (ESAM)



Perform all-in-one enterprise testing: verify that copper cables support gigabit Ethernet, test network connectivity (from Ethernet interface discovery to Layer 4 Port connectivity), discover network devices both on and off the subnet, collect statistics and analyse network utilisation/traffic patterns and perform wirespeed capture on gigabit Ethernet links
Speed certify electrical Ethernet up to 1000BASE-T
Isolate and resolve Ethernet or IP problems in the field using unique, in-depth JDSU J-Mentor capture and decode capabilities

Fusion Splicers

Fusion splicing is the act of joining two optical fibers end-to-end using heat. The goal is to fuse the two fibers together in such a way that light passing through the fibers is not scattered or reflected back by the splice, and so that the splice and the region surrounding it are almost as strong as the virgin fiber itself. The process of fusion splicing involves using localized heat to melt or fuse the ends of two optical fibers together.



Type-39

Dual Heater Core Alignment Splicer



Sumitomo’s Type-39 FastCat™ Core Alignment Fusion splicer is the industry’s first splicer to feature a Dual-Automatic Heater System featuring Auto Start Heater and Auto Start Splice functions — making the FastCat the fastest splicer available today. The Type-39 FastCat’s advanced electronic design, which accommodates the built-in dual heating system and simultaneous operation, reduces the bottle neck of “heater wait time” by 88%. With an individual heater cycle time of only 30 seconds (60mm Fiber Protection Sleeves) and a splice cycle of only 9 seconds, the FastCat improves splicing efficiency by 70%.

LAN Cable Testing



NT1155

ValidatorPRO-NT Ethernet speed certifier



- Measures optical power on single mode and multimode fiber
- Conducts BER testing to speed certify Ethernet data transmission speed up to 1000BASE-T (1 Gb/s)
- Measures SNR and skew to uncover impairments to electrical Ethernet data transmission
- Tests for opens, shorts, split pairs, miswires, and reversals and measures distance to opens and shorts—supports all copper network, telco, and coax cables
- Measure PoE voltage and current (NT only)
- Performs port discovery to detect advertised Ethernet speed and displays capabilities of network devices (NT only)
- Pings network devices to verify connectivity to active equipment (NT only)
- Discover and display essential information regarding functionality of 802.11 b/g/n wireless devices (NT only)
- Includes Plan-Um software to create network layout; document cable tests; show network topology; and record moves, adds, and changes

Includes optical, electrical and wireless testing functionality!



Certifier40G

Next-Generation Cable Certifier



The revolutionary Touch2 design, with intuitive touch screen at both ends makes using the Certifier40G the easiest cable tester ever. The full screen at both ends allows users in the field to minimize their walking time by initiating, configuring, and storing tests from either side of a link or channel. Minimize time spent transferring results off the tester with the capacity to store over 2,000 full Cat-6A graph results. Market-leading 9 second Cat-6A certification time and 15 second Class FA certification ensures maximum installer productivity. The next-generation measurement engine can measure above and beyond the frequencies of current testers, certifying Class-FA frequencies with full Level IV accuracy. The Certifier40G can measure frequencies for all current standards and future cabling standards required for copper cables. The JDSU Certifier40G drives maximum value with a flexible, cost-effective permanent link design, field rugged casing, and simple modular upgrade path. The identical local and remote units make inventory and repair easier. The wide frequency range of the base feature set eliminates further license costs when upgrading for new technologies.

Full certification of copper and optical installations

Multi-Function Test Sets



MTS-4000

All-in-one Access/FTTx/Triple-Play Services Test Set



The MTS-4000 is a small, compact and handheld test platform designed for all phases of the network lifecycle, from the installation to the maintenance of Access/FTTx networks and triple-play services. Modular in design, the MTS-4000 offers field service technicians the highest performance and superior levels of scalability and upgradeability.

Fiber test applications include OTDR, PON meter, video inspection scope, laser source/power meter, and VFL.

Also can be configured to offer many copper test applications.

Test platform for both Copper and Fibre testing.... Ask us how this can suit your multiple requirements.



MTS-6000

Compact Optical Test Platform



Highly integrated field optical test solution for single application. The MTS-6000 is a compact and lightweight test platform designed for the installation and maintenance of fiber networks. It offers field service technicians the highest levels of performance and upgradeability on the market. Modular in design, the MTS-6000 offers an extensive portfolio of test functionality, with over 40 different fiber modules supporting a wide range of applications, and is a single source for future fiber and photonic testing needs.

- Compact and lightweight for the field
- Future proof with over 40 application modules already supported
- Choose from IL/ORL, OTDR, PMD, CD, or WDM plug-in modules
- Application modules compatible with MTS-8000
- Backwards compatibility with existing MTS-5000 family OTDR modules
- Simple for the novice, fully featured for the expert



MTS-6000A

Compact Network Test Platform



MTS-6000A is a compact and lightweight test platform designed for all phases of network lifecycle from the installation to the maintenance of fiber networks. Modular in design, the MTS-6000A offers an extensive portfolio of test functionality for multiple network layers. A single Multi-Services Application module provides an integrated solution for Ethernet, SONET/SDH, and higher-layer tests. Optical Modules allow thorough testing of short-haul, long-haul, FTTx, CWDM, and high speed 40Gbps networks

- Compact, lightweight, rugged, and highly integrated platform
- Multi-layer network solution from physical to services layer
- Visual fault locator and loss test set functions are available
- Next Generation Carrier Ethernet Test Solution
- Backwards compatible with existing MTS-5000 optical modules
- Ethernet, SDH, PDH, WDM, IL/ORL, PMP/CD and OTDR modules available

Optical Fibre Inspection



FBP-SD01

P5000 Digital Probe and FiberChek2 Advanced Kit



FiberChek2 is an advanced application that determines the acceptability of optical fiber end faces through automated inspection and analysis. It identifies and characterizes defects and contamination and determines their location relative to the fiber core. It then provides a PASS or FAIL result according to a pre-configured failure criteria setting.

The P5000 digital probe microscope connects directly to a PC or laptop via a USB 2.0 connection, and the unique QuickCapture™ button lets users capture, inspect, and analyse a fiber end face image in a single automated step.

- Dual-magnification (200/400X) P5000 digital probe microscope with
- USB 2.0 plug
- FiberChek2 automated fiber inspection and analysis software
- Interchangeable FBPT inspection tips (4) in tip case:
- SC-PC bulkhead
- LC-PC bulkhead
- Universal 2.5 mm PC patch cord
- Universal 1.25 mm PC patch cord
- Carrying case

Meet key IEC standards in inspection and reporting



FBP-SM05

INSPECTION KIT 200/400X FBP PROBE W/HD3-P4 DISPLAY



FBP-SM05 includes an FBP series Dual Magnification (200/400X) Probe Microscope with an integrated HD3-P4 display (includes a power supply/charger with US plug). Also included are 2 FBPT series inspection tips (SC & LC) for bulkhead inspection and 2 FMAE adapters (Univ. 2.5mm and Univ 1.25mm) for inspecting patch cords. Kit also includes a carrying case which holds all the components of this kit.

The HD3-P display further expands the value of the popular HD3 series by integrating a PATCHCORD MICROSCOPE (PCM) into the compact design. The result is a significant increase in workflow efficiency and decrease in total inspection time. By combining the power of two microscopes into one system, the HD3-P enables you to inspect both the “female” (bulkhead) and “male” (patch cord) sides of a fiber interconnect at the same time. The patch cord scope accepts our FMAE Series adapters, but is configurable to accept FMA Series adapters with the use of a coupler. The HD3 product line provides ultimate portability and workflow in field applications with a compact design that fits in the palm of your hand.

- 1.8” TFT LCD display
- Power-saving GripSwitch™ feature designed for comfort and efficiency provides instant-ON when held in hand and turns power OFF when released, to extend battery life.
- Built-in rechargeable NiMH battery pack with 3 hours (continuous) run time.
- Low battery warning LED - illuminates when battery life has <30 minutes remaining.

Inspect patchcords and bulkheads in half the time

Optical Light Source



OLS-34

OLS-34, LED Source, 850/1300nm



- The OLS-34 is dedicated to LAN/WAN Access and Enterprise multimode networks
- The ideal complementary tools to the OLP-3x to measure the insertion loss and test the continuity in multimode datacom and local area networks
- Micro USB interface for power supply
- One output port for 2 wavelengths
- 3-years calibration period
- Can be part of the SmartPocket Optical Test Kits

Optical Power Meters

An optical power meter is a device used to measure the power received at a certain point in an optical fibre network. Most commonly used for testing average power in optical fibre systems, however can be designed and calibrated to test specific networks and wavelengths. Used in conjunction with a suitable light source, insertion loss measurements can be recorded being the most common results required for verification of network functionality.



MP-80A

USB Optical Power Meter-High Power: With Software and Acc.



The new MP-series Power Meter from JDSU is a miniature device that measures optical power via a USB 2.0 connection to a PC/laptop. This unique device makes digital processing of optical power measurements possible and integrates directly with the JDSU FiberChek2 software, the industry-leading automated fiber inspection and analysis program. Its size, functionality, and ease-of-use makes it an extremely useful and practical tool when testing optical power levels. The simple, straightforward, and intuitive software interface offers a well-organized digital solution to both fiber inspection and test procedures.

OLP-34

OLP-34 Optical Power meter, Ge, with USB



- The OLP-34 (Ge) is dedicated to LAN/WAN Access and Enterprise multimode or single mode applications.
- JDSU SmartPocket Optical Power Meters (OLP-34, OLP-35, and OLP-38) offer an excellent price/performance ratio in a rugged and pocket-sized housing for straightforward use in the field. Mainly used to measure optical power level (dBm) in premises, telco, or CATV fiber optic networks, they also can be combined with LED (OLS-34/OLS-36) or laser light sources (OLS-35/OLS-36) for insertion loss measurement.
- Extra long battery lifetime (>200 hours).
- 3-years calibration period
- Universal optical interface for all 2.5 mm / 1.25 mm connector
- Individually settable wavelengths per 1 nm step
- Micro USB interface for power supply or data transfer
- Can be part of the SmartPocket Optical Test Kits

Optical Time Domain Reflectometer (OTDR)



E4123MM

Multimode 850/1300 OTDR Module



The OTDR plug-in modules together with the MTS-4000 family of products provide a rugged, battery-operated handheld test solution. The large display combined with a comprehensive user interface make it the ideal OTDR to respond to any test scenario.

850/1300nm at 27/25 dB, 0.8m event dead zone, 4m attenuation dead zone, LAN/Enterprise multimode network qualification.

Works in conjunction with the MTS-4000



E4146QUAD

Multimode / Singlemode 850/1300/1310/1550 nm OTDR



In today's demanding communications market, test solutions must be even more cost-effective, must increase productivity, and must reduce the complexity of field testing. The JDSU Multimode (MM)/Single-mode (SM) Optical Time Domain Reflectometer (OTDR) Modules offer unmatched test functionality specifically developed in response to emerging industry demands.

The MM/SM OTDR module is an all-in-one field test instrument that integrates flexible configuration options and offers multiple wavelength test capabilities.

850/1300/1310 and 1550nm at 27/25/37 and 35 dB
LAN/Enterprise/Access/Metro universal test solution for both multimode and singlemode networks.

Works in conjunction with the MTS-4000



E8111SRL

Short Range LAN 24dB Multimode 850nm OTDR plug-in



In today's telecommunications market, test solutions must be cost-effective, increase productivity, and reduce the complexity of field testing. The JDSU Short Range LAN (SRL) optical time domain reflectometer (OTDR) module offers a high-performance test functionality that has been specifically developed in response to these industry demands

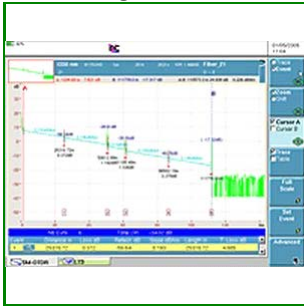
Short Range LAN 850nm at 24dB, 0.5m event dead zone, 2m attenuation dead zone

Works in conjunction with MTS-6000/6000A and 8000



E8123SRL

Short Range LAN 24/24dB Multimode 850/1300 nm OTDR plug-in



- Field interchangeable single slot size.
- Unique automated bi-directional OTDR testing.
- Simple for the novice, fully featured for the expert.
- Short Range LAN 850/1300nm at 24/24dB, 0.5m event dead zone, 2m attenuation dead zone

Works in conjunction with MTS-6000/6000A and 8000

Probe Microscopes and Displays



FIT-S105-AU-PRO

FIBER ESSENTIALS TOOL KIT – AU



Package includes main inspection microscope with patch cord microscope and power meter, consolidated with visual fault locator packaged into a convenient rubber enclosure to maximise ease and speed of use.

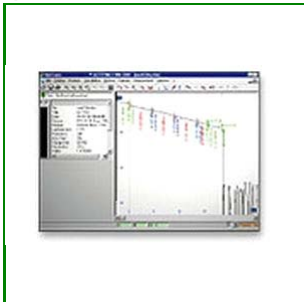
- Inspect both sides of fiber interconnect, and accurately test and measure optical power with one device
- Integrated functions and features eliminate switching between multiple devices
- Input for FBP series probe microscope and a dedicated patch cord microscope (HP3-60-P4) lets users quickly and easily inspect both sides of fiber interconnects
- 1.8 inch TFT LCD to view clear, crisp, detailed images of fiber end faces with optimal resolution
- Integrated power meter (OLP-6) for all single-mode and multimode applications, such as LAN, TELECOM, CATV, and DWDM testing
- Modulation frequency detection lets users identify individual fibers
- Three-year calibration period
- TWINtest and Auto-λ (with JDSU optical light source)

Software



OFS100

Optical Fiber Trace Software



OFS-100 Optical Fibre Trace Software is an intuitive Windows based software package for post processing of optical time domain reflectometer (OTDR), polarization mode dispersion (PMD), chromatic dispersion (CD), optical spectrum analysis (OSA) and optical return loss (ORL) measurements in an office environment. JDSU OFS-100 Optical Fibre Trace Software enables fast and effective post analysis of the test results carried out in the field. It allows results documentation and customisation for report generation.

- Automatic OTDR, DWDM, PMD, and CD trace analysis.
- Reflectance and optical return loss measurements.
- Bi-directional analysis and multiple trace analysis.
- Graphical zoom and offset functions.
- Macro function for custom batch processes.

For troubleshooting and analysis of fiber test results

Visual Fault Locators



FFL-100

UFL – RUGGEDIZED – 2.5mm & 1.25mm



The visual fault locator (VFL) is an essential tool that quickly and easily locates problem areas in fiber cables. By pinpointing the exact location of fiber damage, technicians can diagnose, troubleshoot, and fix the problem efficiently.

- Compact, ergonomic design for ultimate portability
- Visible wavelength is 650 nm
- High powered laser (1 mW) for single-mode (> 7 km) and multi-mode (> 5 km) connectors
- Continuous or Flash illumination
- Universal connector interface for quick and easy connection
- 2.5 mm connector input (1.25 mm adapter available)
- Includes soft-sided carrying case with belt loop

Also available in pocket size unit

Product Offering



Analysers

Audio Analysers
EMC Test Equipment
Impedance Analysers
Network Analysers < 10GHz
Network Analysers > 10GHz
Spectrum Analysers < 1GHz
Spectrum Analysers > 13GHz
Spectrum Analysers 1GHz - 3GHz
Spectrum Analysers 3GHz - 13GHz
Vector Signal Analysers
Waveform & Distortion Analysers



Communications Test

Bit Error Rate Test Sets (BER, BERT, BERTS)
Cable Locators
Circuit Transmission Test Sets
Fibre Channel Protocol Analysers
Fibre Switches
Fusion Splicers
ISDN Test Sets
LAN Cable Testers (CAT 5, CAT 6)
Multiple Application Platform
Optical Light Sources
Optical Loss Kits
Optical Power Meters
Optical Spectrum Analysers
OTDR
Protocol, LAN & WAN Analyser Test Sets
Selective Level Meters
SONET / SDH Test Sets
T-Carrier / PDH Test Sets
USB Protocol Analysers



Counters

Microwave Counters
Modulation Domain Analysers
Universal and Multi-function Counters



Electrical & Industrial Test

Battery Test Equipment
Cable Locator & Fault Finder
Circuit Breaker Test Sets
Environmental Test Chamber
Ground-Resistance Testers
High-Potential Testers (Hipot)
Infrared Imagers
Insulation-Resistance Testers
Low-Resistance Ohmmeters
Oil-Test Equipment
Power Factor Test Sets
Power Quality / Power Demand Analysers
Power Recorders
Protective Relay Test Sets
Transformer Testers



General Purpose Test

Detectors, Directional Couplers, Power Spli
Fixed Attenuators, Variable Attenuators
General Purpose Amplifiers
Microwave Amplifiers
VXI Test Equipment



Generators

Data Generators
Digital Vector Generators
Function Generators & Arbitrary Waveform
Pulse Generators
Signal Generators < 6GHz
Signal Generators > 6GHz
Sweep Generators



Logic Analysers

Digital Oscilloscopes < 2 GHz
Logic Analysers- Portable / Stand Alone



Meters

Digital Multimeters
LCR Meters & Resistance Meters
Modulation Meters
Noise Figure Meters & Noise Sources
Power Meters & Power Sensors
Sound Level Meters



Oscilloscopes

Analog Oscilloscopes
Digital Oscilloscopes < 2 GHz
Digital Oscilloscopes > 6 GHz
Digital Oscilloscopes 2GHz - 6GHz
Probes
Sampling Scopes & Plug-Ins



Power Sources

AC Power Supplies & Amplifiers
AC/DC Calibrators
Battery Chargers
Bipolar Power supplies
DC Power Supplies & Loads



Recorders

Data Acquisition Systems
Instrumentation Tape Recorders
Power Recorders
Strip Chart Recorders



Television Test

Cable Plant Sweep Equipment
Measurement Sets
Picture Quality Analysers
Video & Audio Generators & Analysers
Waveform Monitors



Wireless Test

Drive Test Equipment
SiteMasters / Antennas / Base Station Test
Wireless Appliance (Handset) Test



MTS-4000 OTDR



FSH3 Spectrum Analyser



ECOMPACT 4 Immunity Tester



HMO3524 Oscilloscope