

INSPECT BEFORE YOU CONNECTSM

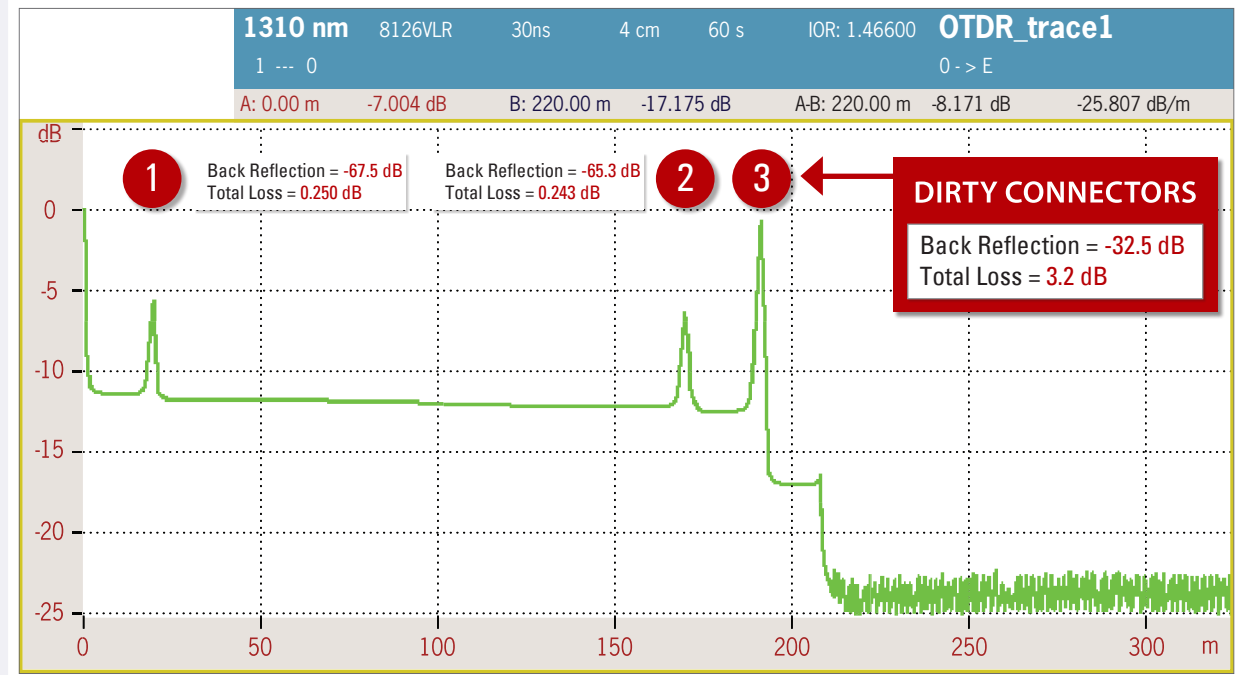
CONTAMINATION IS THE #1 SOURCE of troubleshooting in optical networks.

- 80% of field test failures can be attributed to dirty connectors.
- Microscopic debris can significantly affect signal performance and cause permanent damage.
- Particles can break apart, spread, and migrate when dirty connectors are mated.
- A typical dust particle is 2–15 µm, and can only be viewed with a microscope.

JDSU offers the most comprehensive product portfolio for inspecting every fiber connector and application in your network.



OTDR Trace of Fiber Contamination and Its Effect on Signal Performance



1 CLEAN CONNECTORS



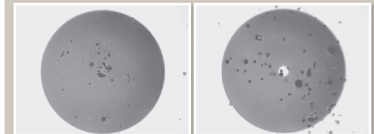
Back Reflection = -65.3 dB
Total Loss = 0.243 dB

2 CLEAN CONNECTORS



Back Reflection = -67.5 dB
Total Loss = 0.250 dB

3 DIRTY CONNECTORS



Back Reflection = -32.5 dB
Total Loss = 3.2 dB

This OTDR trace illustrates how a dirty fiber connection can affect overall signal performance. **INSPECT BEFORE YOU CONNECT!** Proactively inspecting each fiber connection will significantly reduce network downtime and troubleshooting.