



ABN 43 064 478 842

231 Osborne Avenue Clayton South, VIC 3169
PO Box 1548, Clayton South, VIC 3169
t 03 9265 7400 f 03 9558 0875
freecall 1800 680 680
www.tmgtestequipment.com.au

Test & Measurement

- > sales
- > rentals
- > calibration
- > repair
- > disposal

Complimentary Reference Material

This PDF has been made available as a complimentary service for you to assist in evaluating this model for your testing requirements.

TMG offers a wide range of test equipment solutions, from renting short to long term, buying refurbished and purchasing new. Financing options, such as Financial Rental, and Leasing are also available on application.

TMG will assist if you are unsure whether this model will suit your requirements.

Call TMG if you need to organise repair and/or calibrate your unit.

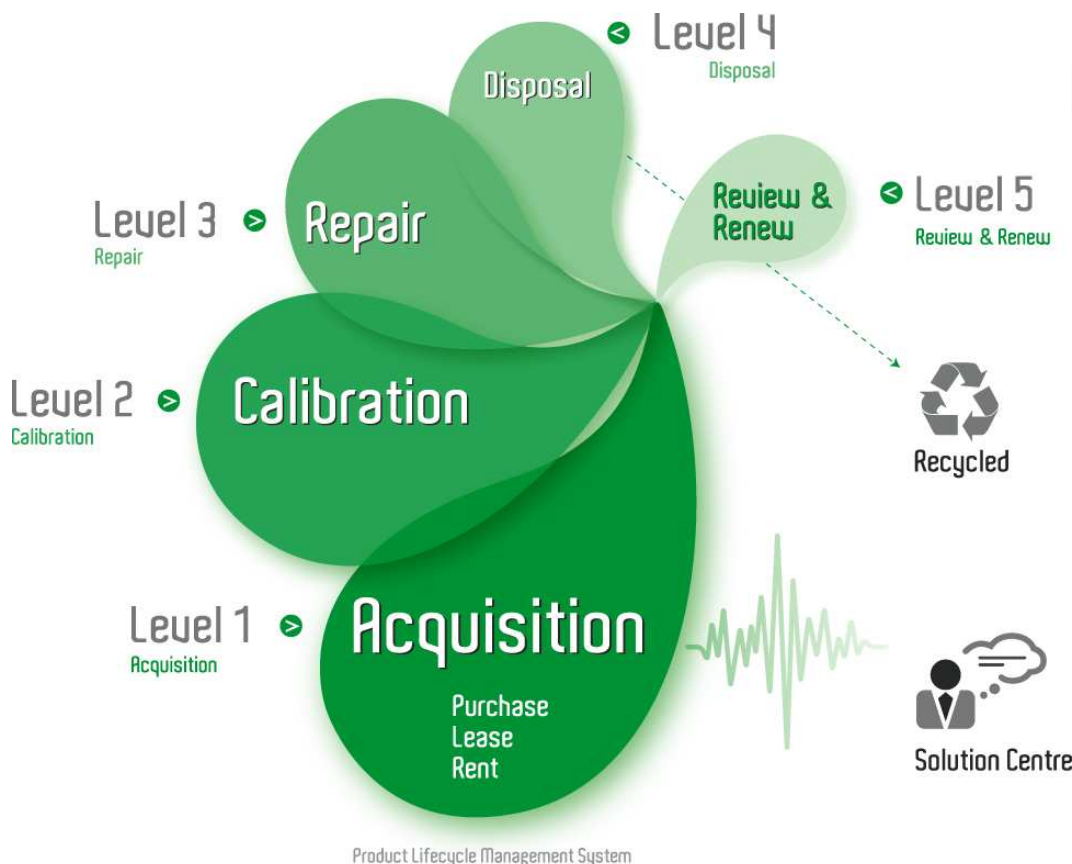
If you click on the "Click-to-Call" logo below, you can call us for FREE!

TMG Corporate Website

TMG Products Website



Click-to-Call
TMG Now



Product Lifecycle Management System

Disclaimer:

All trademarks appearing within this PDF are trademarks of their respective owners.



Dash 18X / Dash 18 Data Acquisition Recorder

QUICK START GUIDE

Supports Recorder System Software Version 3.1

1. INTRODUCTION
2. GETTING STARTED
3. HARDWARE OVERVIEW
4. MENUS & BUTTONS
5. USING THE DASH 18X / DASH 18
6. SETTING UP THE DISPLAY APPEARANCE
7. AMPLIFIER SETTINGS
8. SAMPLE EXERCISE
9. POWERING DOWN

Astro-Med, Inc.

Astro-Med Industrial Park, 600 East Greenwich Ave., West Warwick, RI 02893

Toll-Free Phone: 800-343-4039 Phone: 401-828-4000 Fax: 401-822-2430

email: mtgroup@astromed.com

1. INTRODUCTION

Thank you for choosing an Astro-Med data acquisition recorder. This Quick Start Guide was prepared to let you get acquainted with your recorder as quickly as possible. We even include a sample exercise so you can become familiar with the basic operation.

This Quick Start Guide supports two models: The Dash 18X and the Dash 18. Throughout this guide, both models will be referred to as Dash 18X / Dash 18.

The Dash 18X / Dash 18 is a powerful and versatile data acquisition recording system that provides the capability to display, record, and review waveform data. Universal inputs let you connect almost any signal without using external signal conditioning. The Dash 18X / Dash 18 can record a wide range of voltages, temperature, DC Bridge and frequency inputs. Each channel can be independently set up.

Data samples from up to eighteen signals can be acquired at rates up to 100,000 samples per second per channel and streamed directly to a high-capacity hard drive. Each channel can be independently set up to trigger a capture.

The Dash 18X / Dash 18 utilizes a touch-screen as the main user interface. Many of the Dash 18X / Dash 18 control buttons are customizable, providing the capability to modify the display based on the needs of the user or application.

2. GETTING STARTED

Voltage Verification: The Dash 18X / Dash 18 has an auto-sensing power supply that operates from 102 - 264 VAC. The Dash 18X / Dash 18 draws 300 Watts maximum.

Connect AC Power Cord: Connect AC power cord to the side panel, then to an outlet.

Turn On Dash 18X / Dash 18: When you turn on the Dash 18X / Dash 18, the display will show various initialization screens and then load in the last setup it had before it was powered down.

Signal Inputs: The Dash 18X / Dash 18 can record up to eighteen channels of analog signals. Each channel can be configured to record a variety of voltages, temperature, DC Bridge and frequency inputs.

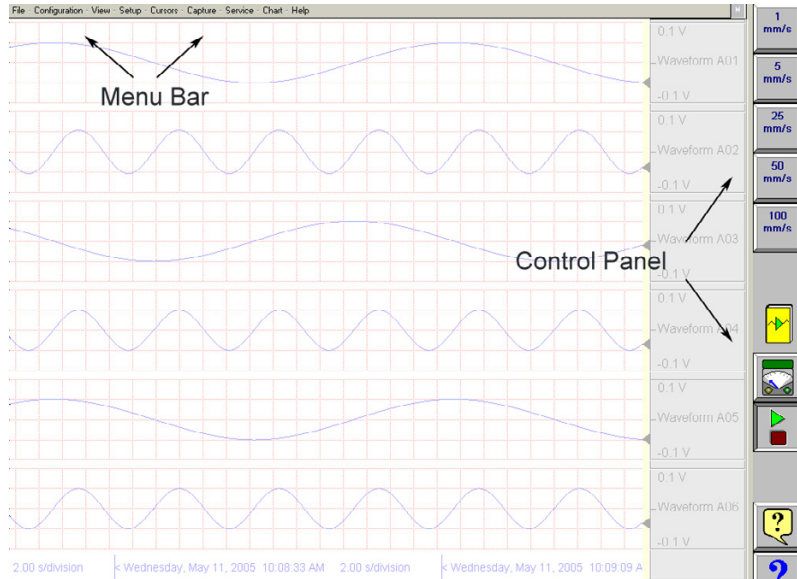
Display: The Dash 18X / Dash 18 has a large touchscreen display. The display is divided into two main areas, the Waveform Display Area (shows the waveform signals typically drawn onto a grid pattern) and the Control Panel (rows of control buttons for operation).

3. HARDWARE OVERVIEW

The following is a summary of the location of the physical components of the Dash 18X / Dash 18.

Front View:	Touch Screen, Carry Handle
Bottom View:	Module Docking Connector (SCR-18 printer or PIM-18 power module)
Right Side View:	Signal Inputs (banana jack inputs, differential inputs), Computer connections (parallel port, USB port, Ethernet port, Mouse port, Keyboard port, Modem slot)
Left Side View:	Power indicator light, Power switch, Power inlet, Utility port, Event port, Zip [®] Drive

4. MENUS & BUTTONS



Dash 18X / Dash 18 screen highlighting the Menu Bar and Control Panel

MENU BAR

The menu bar is a group of drop-down menus located across the top of the display. All Dash 18X / Dash 18 modes and features can be accessed from this menu. Options available from the menu bar will vary based on the mode of operation (Realtime, Scope, or Review) used.

If the date and time are visible instead of the menu bar, choose the **M** button in the upper right hand corner, which toggles the display of date/time and menu bar.

File Configuration View Setup Cursors Capture Service Chart Help

File
Configuration
View
Setup
Cursors
Capture
Service
Chart
Help

The File menu is used to save and load your setup files.
The Configuration menu is used to select the operation of the Dash 18X / Dash 18.
The View menu is used to supplement the graph display of your signals.
The Setup menu is used to configure the Dash 18X / Dash 18.
The Cursors menu is used for time and amplitude measurements.
The Capture menu is used to setup, arm, manual trigger, and abort data captures.
The Service menu is for less frequently used parameters such as calibration and security settings.
The Chart menu provides for operation of the optional SCR-18 thermal recorder.
The Help menu provides for on-line assistance.

CONTROL PANEL

The control panel is an array of icon-based buttons located on the right hand side of the display. The icon buttons allow for a single touch to execute a function. The Dash 18X / Dash 18 ships with the control panel displaying icon buttons for speed control, analog set up, meter mode, and run/halt.

The control panel can be customized to add or remove icon buttons to suit your recording needs. Further, the control panel settings can be saved to a file for later recall making test preparation very easy.

Commonly Used Buttons

The following buttons are commonly used in Dash 18X / Dash 18 windows:



OK saves the information you entered in a window and then closes the window.



Exit cancels the action you were performing in a window and closes the window without saving any changes.



Apply saves the information you modified in a window without closing the window.



Select All selects/highlights all items in a list box.



Clear Selection removes the selections/highlights from all items in a list box.



Copy copies the selected items (or characteristics of selected items) to the clipboard.



Paste pastes the clipboard contents to the selected location.



Save saves current configurations to a file on your disk.



Load loads configurations from a file on your disk.

5. USING THE DASH 18X / DASH 18



The Dash 18X / Dash 18 has three modes of operation, Realtime, Scope, and Review modes.

Realtime Mode: Realtime mode provides real-time waveform scrolling, monitoring, and data capture capabilities. Additionally, almost all system setup options are accessible from Realtime mode.

Scope Mode: Scope mode acts like a digital storage oscilloscope, providing high time-base resolution for viewing high-frequency signals. If the optional DSO-8 scope card is installed, high-speed scope captures up to ten million samples per second can be acquired using Card mode.

Review Mode: Review mode provides the capability to review and analyze saved data captures and scope captures.

Help: Within the Dash 18X / Dash 18, three forms of help are available:

Context Help	The context help feature provides context sensitive, on-screen help for the Dash 18X / Dash 18.	
Button Help	The button help feature provides on-screen help for the Dash 18X / Dash 18 buttons. A brief description of the selected button is provided.	
Online Manual	The Adobe Portable Document Format (PDF) version of the manual is available on the Dash 18X / Dash 18 for on-screen viewing.	

6. SETTING UP THE DISPLAY APPEARANCE

The Dash 18X / Dash 18 gives you total control over chart layout. You can set individual channel widths, channel location, grids ON/OFF, and major/minor division sizing. You are also able to suppress or enable waveform display as well as vary the waveform trace thickness. Further, you can overlap some or all of the channels.

Basic Channel Views: The Dash 18X / Dash 18 provides basic channel views that you can access from the menu bar. These views allow you to choose a fixed number of channels to display. In Realtime mode, choices are Basic 6, 12, or 18 channels. In Scope or Review mode, choose from 1, 2, 6, 12, or 18 channels.

Custom Channel Views: If you don't find a view from the Basic Channel Views described above, you can use the Chart / Display wizard. The wizard allows you to pick the number of channels to display. You can further customize your chart by overlapping or resizing the channels. You can also add, remove, or replace channels.

7. AMPLIFIER SETTINGS

Each channel has unique amplifier settings. You can choose what type of signal the channel will measure (voltage, temperature, etc.) In addition to setting the span for the channel, you can also adjust the zero volt position. For convenience, amplifier settings can be copied to other channels. Further, user scaling is supported so that your channels can report their values to you in Engineering Units.

8. SAMPLE EXERCISE

9 Volt Battery Test

Items needed: 9 Volt battery. Signal input leads.

In the following hands-on exercise, you will set up a channel to monitor a 9 volt battery in realtime. Next, a data capture will be set up to record when the battery voltage is applied. Finally, the captured data will be reviewed.

In the exercise, every action needed is detailed in a step-by-step fashion to help you quickly become familiar with the operation of the Dash 18X / Dash 18. The **ACTION** on the left-hand side describes what is to be done. The **HOW TO** section provides the detailed steps to take using the pull-down menus of the Menu Bar.

I. Real-time Monitoring: Monitor the voltage of a 9 Volt battery.

Set up the channel so that when there is no signal, the waveform trace will be at the center of the channel and when the 9 Volt signal is applied, the waveform trace will be near the top of the channel.

ACTION

HOW TO

(Use the Menu Bar Pull-Down menus)

Verify Menu Bar display

If the date and time are shown at the top of the screen, press the **M** icon in the upper right hand corner to show the Menu Bar.

File Configuration View Setup Cursors Capture Service Chart Help

M

Dash 18X / Dash 18 Menu Bar

Default the
Dash 18X / Dash 18

Choose **Configuration** >> **Utilities** from the menu bar to open the Utilities window.
Choose **Defaults** >> **System** from the menu bar to set the recorder to factory defaults.
Click **Yes** to accept.

Enter Realtime Mode

Choose **Configuration** >> **Realtime** from the menu bar to enter Realtime Mode.

Select Basic 6 Channel View

Choose **View** >> **Basic 6 Channel** from the menu bar.

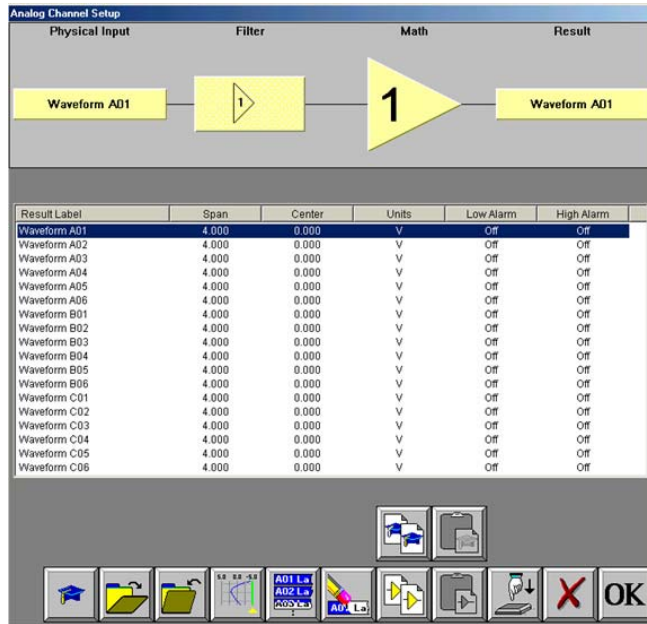
Set speed to 5 mm/sec

Press the **[5 mm/s]** button on the control panel.



Continued...

Set Channel #1 to be
0 - 11 Volts FS



Dash 18X / Dash 18 Amplifier Channel Settings Window

Choose **Setup** >> **Amplifier Channel Settings** from the menu bar.
Highlight Waveform A01.



Span adjustment keypad

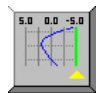
Press the **Span** column. Press the digit “1” twice to select eleven. Press **OK**.

Next to the Span column is the Center / Bottom column. This is a toggle to show you the value for the Center and Bottom of the channel.

Toggle the baseline button (4th button from the left in the row of icons at the bottom) so that the baseline reads **Bottom**.

Press the **Bottom** column. Press the digit “0”. Press **OK**.

Press **OK** at the lower right hand corner of the menu.



Input battery voltage into
Channel #1

*Use the banana jack input connection located on the side of
the Dash 18X / Dash 18 and input the battery voltage into Channel #1.*

Measure the battery voltage
using the color display

Choose **View** >> **Meter** from the menu bar to activate the Meter Mode.

Observe the battery voltage.

Choose **View** >> **Meter** from the menu bar to remove the meter.

Remove battery voltage.

This completes the first part of the exercise, Realtime Monitoring.

II. Data Capture Settings:

Set up a single data capture for 10 seconds. Of the total capture time, two seconds of the capture should show what the signal looked like before the battery voltage was applied. The sample rate will be 1,000 samples per second.



Capture Settings Window

ACTION

HOW TO (Use the Menu Bar Pull-Down menus)

Enter data capture setup

Choose **Capture >> Capture Settings** from the menu bar for data capture setup.

Select capture of Channel 1

Highlight Waveform A01. Be sure the **Rate** for Channel 1 is **Standard**. If not, click on the **Rate** menu bar and select **Standard**.

Set sample rate to 1 kHz

In the Sample Rates box, press the down arrow titled **Standard Rate**. Scroll down and press **1,000**.

Set capture for 10 seconds

In the Storage Allocation box, press the units pull-down box and select **Seconds**. (Other choices are minutes, hours and Ksamples). Press the value box to open the Seconds Window. Press the digits "1" and "0". Press **OK**.

Set trigger point at 20%

In the Storage Allocation box, press the **Percent Pre-trigger** box. Press the digits "2" and "0". Press **OK**. Be sure there is a green check mark next to the **Percent Pre-Trigger**.

Verify time of capture

Below the waveform selection window, in yellow text, the Record Duration should be 10 seconds, the Pre-Trigger Duration should be 2 seconds.

Set capture for one record

In the Automation Box, be sure that both the Auto Re-Arm & Auto Archive are **not** checked. At this point, your Capture Settings Window should look like the image on the previous page.

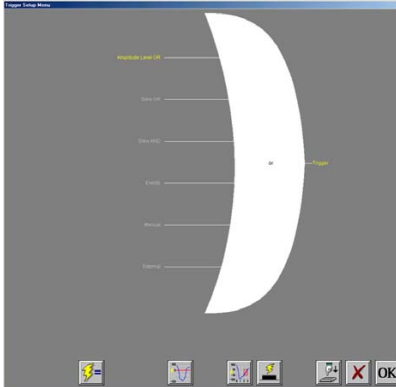
Save and exit data capture setup

Press **OK**.

This completes the second part of the exercise, Data Capture Settings.

III. Trigger Setup and Data Capture:

In the Data Capture Settings section above, a ten second capture was set up with two seconds of pre-trigger (data before the trigger). In this section, a trigger level of 8 Volts will be set with a rising slope so that as the signal rises and reaches 8 Volts, the data capture will be triggered.



Trigger Setup Menu

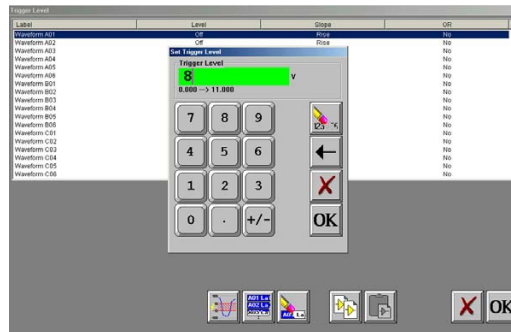
ACTION

Enter Trigger Setup
Select level triggering

HOW TO (Use the Menu Bar Pull-Down menus)

Choose **Setup** >> **Trigger Settings** from the menu bar to enter Trigger Setup.

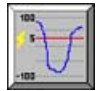
Press **Amplitude Level OR** to highlight in yellow. Be sure all other trigger types (other OR types, AND types, manual, etc.) are **not** highlighted. If so, press them to deselect.



Trigger Level

Set to trigger when 9 Volts is applied

Press the Trigger Level button (2nd button located in row of buttons at the bottom). In the Trigger Level window, highlight Waveform A01. Press **Level**. Then press **New Value**. Press the digit "8". Press **OK**. Press **Slope**. Then press **Rise**. Press **OR**. Then press **Yes**. Press **OK** at the lower right hand corner of the menu. *You have just set the trigger to be asserted when the signal input into channel one rises past 8 Volts.*



Save and exit trigger setup

Press **OK**. Press **OK**.

Arm for capture

Choose **Capture** >> **Arm** from the menu bar to arm for capture. *The Capture Progress window pops up indicating status.*

Input battery voltage into Channel #1

A trigger should be produced and the capture continues to the end. While capturing, you should have seen the waveform for Channel #1 increase from the bottom of the channel to near the top of its channel.

This completes the third part of the exercise, Trigger Setup and Data Capture.

IV. Data Review:

Data capture records can be reviewed on the color display. VCR-like control buttons allow for convenient scrolling through the data. Cursors can be placed on the data for measurements. During review, the timebase can be expanded or compressed to give appropriate detail of the signal. From the display, part of or all the data can be saved.

Filename	Creation Time	Status	Size
D18_05-05-2003_10-58-54-490	05/05/2003 10:58:54	Valid	317 KB
D18_05-05-2003_10-58-10-270	05/05/2003 10:58:10	Valid	219 KB
D18_05-05-2003_10-54-31-450	05/05/2003 10:54:32	Valid	44,546 KB
D18_04-25-2003_14-10-21-270	04/25/2003 14:10:22	Valid	3,628 KB
D18_04-25-2003_14-09-25-270	04/25/2003 14:08:26	Valid	5,080 KB
D18_04-25-2003_14-01-18-990	04/25/2003 14:01:21	Valid	1,407 KB
D18_04-22-2003_15-46-26-580	04/22/2003 15:46:33	Valid	74,234 KB
D18_04-21-2003_11-42-09-880	04/21/2003 11:42:24	Valid	18,570 KB
D18_04-21-2003_11-38-33-200	04/21/2003 11:38:44	Valid	18,570 KB
D18_04-21-2003_11-34-59-590	04/21/2003 11:35:11	Valid	18,570 KB
D18_04-21-2003_11-33-53-960	04/21/2003 11:33:54	Valid	18,570 KB
D18_04-21-2003_11-30-51-700	04/21/2003 11:30:32	Valid	18,570 KB
D18_04-21-2003_09-56-17-530	04/21/2003 09:56:17	Valid	7,437 KB
D18_04-18-2003_16-08-21-610	04/18/2003 16:08:21	Valid	7,437 KB
D18_04-18-2003_13-18-28-650	04/18/2003 13:18:29	Valid	18,570 KB
D18_04-18-2003_13-18-28-650	04/18/2003 13:18:29	Valid	18,570 KB
D18_04-18-2003_08-58-14-370	04/18/2003 08:58:53	Valid	1,128 KB
D18_04-18-2003_08-58-08-090	04/18/2003 08:58:09	Valid	56 KB
DCR_04-17-2003_16-10-36-180	04/17/2003 16:10:37	Valid	7,437 KB
DCR_04-17-2003_16-07-20-620	04/17/2003 16:07:22	Valid	7,437 KB
DCR_04-17-2003_13-34-11-720	04/17/2003 13:34:14	Valid	18,570 KB
DCR_04-17-2003_11-52-06-630	04/17/2003 11:52:21	Valid	19 KB
DCR_04-17-2003_07-20-24-980	04/17/2003 07:20:35	Valid	460 KB
DCR_04-16-2003_16-16-48-300	04/16/2003 16:16:50	Valid	2,945 KB
DCR_04-16-2003_14-56-00-790	04/16/2003 14:56:01	Valid	2,945 KB
DCR_04-16-2003_14-52-48-550	04/16/2003 14:52:49	Valid	2,945 KB
DCR_04-16-2003_14-46-29-620	04/16/2003 14:46:30	Valid	2,945 KB

List of data capture records for review

ACTION

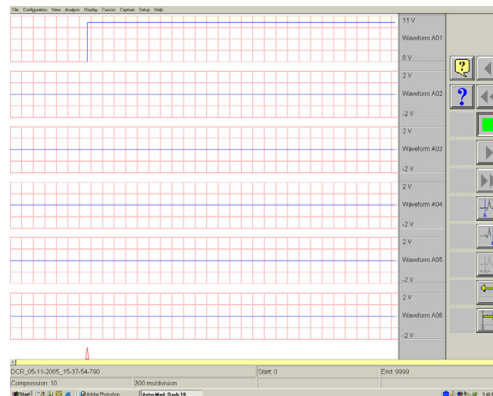
HOW TO (Use the Menu Bar Pull-Down menus)

Enter Review Mode

Choose **Configuration** >> **Review** from the menu bar to enter the Review Mode.

Select file to be reviewed

Click on the top-most file name to highlight the capture. Press **OK**.



Data Capture Review of 9 Volt battery data capture

Show entire capture

Choose **Display** >> **Show All File** from the menu bar to show entire capture.

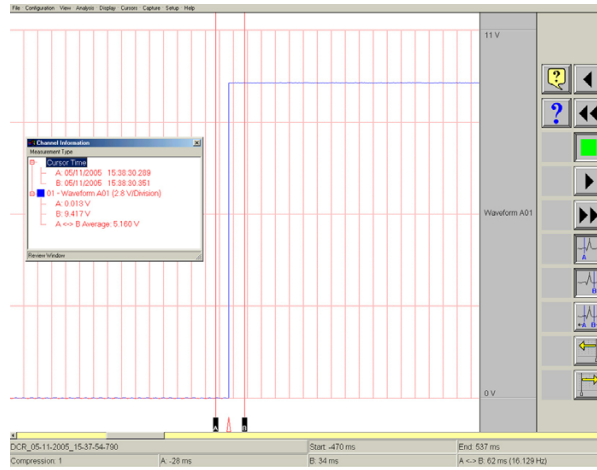
Note: If the entire file is already shown, a check mark will be next to Show All File in the Display pull-down menu.

Show the trigger point

Choose **Display** >> **Show Trigger Line** from the menu bar to show the trigger point.

Note: The trigger line is shown as a red vertical line. If the trigger line is already shown, a check mark will be next to Show Trigger Line in the Display pull-down menu. Be sure the trigger line is shown on the display.

Continued.....



Using cursors to make measurements

- | | |
|--------------------------------------|--|
| Show only Channel 1 | Choose View >> 1 Channel from the menu bar to show only Channel 1. |
| Expand the time base | Choose Display >> Compression from the menu bar. Press the digit “1”. Press OK . |
| Scroll through the data | Use VCR buttons. You can jog forward or backwards through the data. You can stop at any points of interest. Experiment scrolling forwards and backwards.

Continue to scroll and stop the display when you have the trigger point (red vertical line) in the middle of the display. |
| Cursors | Press the A cursor icon. Slide the cursor just to the left of the trigger point. Press the B cursor icon. Slide the cursor just to the right of the trigger point.
<i>Hint: You can use the yellow arrow icons to fine tune the location of the cursors.</i> |
| Time measurements using cursors | Choose View >> Status Text Format >> Relative Time from the menu bar. Observe the time values shown at the bottom. |
| Amplitude measurements using cursors | Choose View >> Show Channel Information from the menu bar. Press a yellow arrow icon to move a cursor. Observe the change in values in the Channel Information window. |
| Remove the cursors | Press the A cursor button and B cursor button to remove them. |
| Show entire capture | Choose Display >> Show All File from the menu bar to show entire capture.
<i>This completes the sample exercise.</i> |



9. POWERING DOWN

When the power switch is set to the off position or if AC power is lost or removed, the Dash 18X / Dash 18 begins the power down sequence. This is indicated by the green LED next to the power switch that will be on while the power down sequence occurs. Note that the LED will either be a solid green or it may flicker. It is **very important** not to turn the power switch back to the on position during the power down stage. The Dash 18X / Dash 18 must be allowed to complete the power down sequence to insure proper operation.

This completes the Dash 18X / Dash 18 Quick Start Guide. Please note that the Dash 18X / Dash 18 has much more capability than presented in this guide. Please see the Operations Manual for details. Should you require additional assistance, you can contact our Technical Support Department toll-free at 800-343-4039 or by e-mail: techserv@astromed.com