



ABN 43 064 478 842

231 Osborne Avenue Clayton South, VIC 3169
PO Box 1548, Clayton South, VIC 3169
t 03 9265 7400 f 03 9558 0875
freecall 1800 680 680
www.tmgtestequipment.com.au

Test & Measurement

- > sales
- > rentals
- > calibration
- > repair
- > disposal

Complimentary Reference Material

This PDF has been made available as a complimentary service for you to assist in evaluating this model for your testing requirements.

TMG offers a wide range of test equipment solutions, from renting short to long term, buying refurbished and purchasing new. Financing options, such as Financial Rental, and Leasing are also available on application.

TMG will assist if you are unsure whether this model will suit your requirements.

Call TMG if you need to organise repair and/or calibrate your unit.

If you click on the "Click-to-Call" logo below, you can call us for FREE!

TMG Corporate Website

TMG Products Website



Click-to-Call
TMG Now



Product Lifecycle Management System

Disclaimer:

All trademarks appearing within this PDF are trademarks of their respective owners.



DEC 6

Decoupling Network for Symmetrical Data and Control Lines

■ The **DEC 6** is used for decoupling auxiliary equipment from an EUT tested with 10/700us impulses up to 6.6kV peak. It is used to decouple unshielded symmetrical data and signal lines according standard ITU K.44. Up to 4 wires can be tested simultaneously.

To obtain maximum flexibility only decoupling and protection elements are included in the DEC 6. Coupling circuits, which depends on the EUT to be tested, can be placed separately in the test setup.

Manual coupling selection of the protection elements for best protection of the auxiliary equipment.

Default protection elements are gas arrestors and breakdown avalanche diodes (ABDs). With such elements the capacitive load to the EUT lines is small. The decoupling elements can be selected easily. It is also possible to test without any protection elements.

The DEC 6 can be used together with the coupling networks PCD 120, PCD 122 and PCD 800. These provide all the coupling elements as required to perform IEC, ANSI, FCC and EN testing.

With a 100 year history of innovation, service centers on three continents and a full staff development and support engineers, Haefely is the clear choice for all your transient immunity test needs.



■ Features

- ☑ Decoupling **resistors 200 Ohm**
- ☑ **10/700us** telecom impulses and **1.2/50us - 8/20us** impulses
- ☑ Breakdown avalanche **diodes** and gas **arrestors** as protection elements
- ☑ Up to **4 wires** can be tested
- ☑ Signal **Bandwidth up to some 10MHz**

■ Benefits

International application – Specifically designed to meet and exceed the requirements of:

- IEC / EN 61000-4-5 Edition 1 Figure 12 (*)
 - IEC / EN 61000-4-5 Edition 2 Figure 14 (*)
 - IEC / EN 61000-4-12 Edition 2 Figure 12 (*)
 - ITU K.44: 2003 Figures A.5-1, A.6.1-1 to A.6.1-5
- (*) The DEC 6 is not normative for IEC standards!

Safe and Easy - All the sockets are safety banana plugs to ensure maximum safety to the user. The selected protection element can be seen at a glimpse.

Sturdy and Reliable – Careful component selection ensures that the DEC 6 will continue to operate under the most strenuous testing regimen.

Report Generation - The unit controller can automatically generate test reports without a computer. Add WinFEAT&R control and reporting software on a host PC to collect and collate data in any format you like.

■ Applications

- ☑ Unshielded symmetrical data and signal lines
- ☑ Telecommunication equipment
- ☑ Other international requirements for surge testing symmetrical data- and control lines such as TIA-968-A (FCC part 68)

■ Technical Specifications

Impulse shapes	10/700us 1,2/50us - 8/20us	
Impulse amplitude	max. 6.6kV	
Decoupling elements	Resistors 200 Ohm	
Voltage on EUT lines	max. 72V _{DC} or 50V _{AC,RMS} max. 144V _{DC} or 100V _{AC,RMS}	with gas arrestors as protection elements with ABDs as protection elements
Current on EUT lines	max. 0.1A	
Signal bandwidth for the EUT signals	up to some 10MHz	

Other decoupling elements on request.

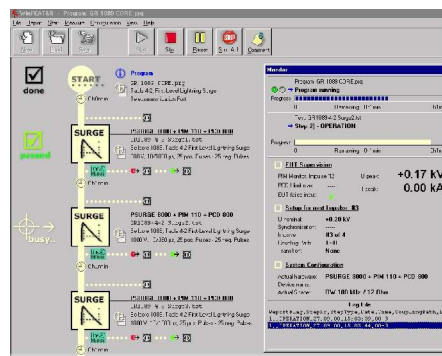
Weight and Dimensions

Weight	approx. 2 kg net	Dimensions	30 x 20 x 16 cm (w x h x d)
--------	------------------	------------	-----------------------------

■ DEC 6 Art. No. 249015 Scope of Supply

- Qty. 1 DEC 6
- Qty. 1 Cable set
- Qty. 4 Short circuit bridges
- Qty. 1 Users Manual

WinFEAT&R Control Window



■ Options and Accessories

- PCD 120 Automatic operated coupling unit according ITU K.44 and IEC 61000-4-5
- PCD 122 Manual operated coupling unit according IEC 61000-4-5 and ITU K.44
- PCD 800 Automatic operated coupling unit according to TIA-968-A (FCC part 68)
- PSURGE 8000 Mainframe of the Surge Platform
- PIM 120 10/700µs impulse module
- PIM 800 10/560µs, 10/160µs and 9/720µs impulse module according to FCC part 68
- WinFEAT&R Control and reporting software. Runs under windows 98, NT, ME, 2000, XP

Headquarters
Haefely Test AG
 Lehenmattstrasse 353
 CH-4052, Basel
 Switzerland

+ 41 61 373 41 11
 + 41 61 373 45 99
EMC-sales@haefely.com

Locate your local
 sales representative at
www.haefelyEMC.com



HAEFELY EMC
 TECHNOLOGY

North American Office
Hipotronics Inc.
Haefely EMC Division
 1650 Route 22
 Brewster, NY 10509

++1 845 279 3644 x264
 ++1 845 279 2467
EMCsales@hubbell-haefely.com