



ABN 43 064 478 842

➤ 231 osborne avenue clayton south, vic 3169  
PO box 1548, clayton south, vic 3169  
t 03 9265 7400 f 03 9558 0875  
freecall 1800 680 680  
[www.tmgtestequipment.com.au](http://www.tmgtestequipment.com.au)

## Test & Measurement

- sales
- rentals
- calibration
- repair
- disposal

## Complimentary Reference Material

This PDF has been made available as a complimentary service for you to assist in evaluating this model for your testing requirements.

TMG offers a wide range of test equipment solutions, from renting short to long term, buying refurbished and purchasing new. Financing options, such as Financial Rental, and Leasing are also available on application.

TMG will assist if you are unsure whether this model will suit your requirements.

Call TMG if you need to organise repair and/or calibrate your unit.

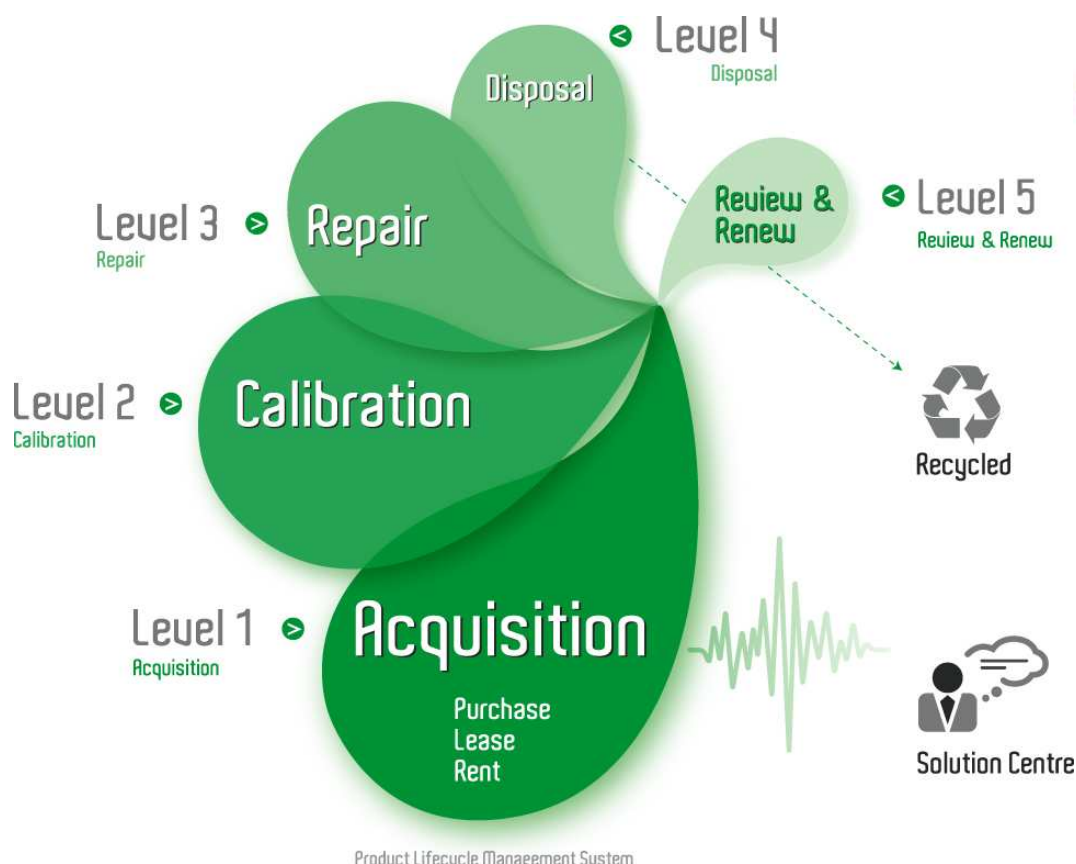
If you click on the “Click-to-Call” logo below, you can call us for FREE!

TMG Corporate Website

TMG Products Website



Click-to-Call  
TMG Now



### Disclaimer:

All trademarks appearing within this PDF are trademarks of their respective owners.



# PCD 122

## Coupling Network for Symmetrical Data and Control Lines

■ The **PCD 122** is used for coupling of 10/700µs impulses up to 6.6kV peak onto unshielded symmetrical data and signal lines according IEC/EN and ITU standards. Up to 2 pairs / 4 wires can be tested simultaneously.

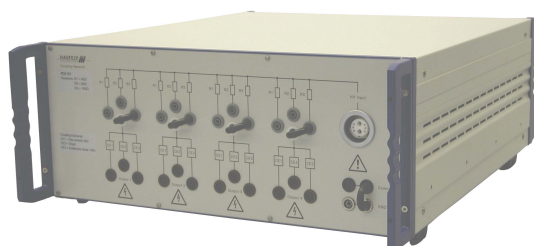
**To obtain maximum flexibility** only coupling elements are included in the PCD 122. Decoupling circuits, which depends on the EUT to be tested, can be placed separately in the test setup.

**Manual coupling path switching** for common mode (longitudinal, line to earth) and for differential mode (transverse mode, line to line) testing.

**Default coupling elements** are gas arrestors and breakdown avalanche diodes. The coupling elements can be selected easily. The direct coupling output allows the customer to use his own coupling elements.

The PCD 122 can be used together with the impulse module PIM 120 from the Surge Platform. This provides all the programming functions required to perform IEC, ANSI and EN testing also without the need of a control computer.

With a 100 year history of innovation, service centers on three continents and a full staff development and support engineers, Haefely is the clear choice for all your transient immunity test needs.



### ■ Features

- ☑ 10/700µs impulses
- ☑ Serial resistors included
- ☑ Up to 4 wires can be tested
- ☑ Signal Bandwidth up to >10MHz
- ☑ Low capacitive load on the EUT lines
- ☑ Manual coupling path selection

### ■ Benefits

**International application** – Specifically designed to meet and exceed the requirements of:

- IEC / EN 61000-4-5 Edition 1 Figure 12
- IEC / EN 61000-4-5 Edition 2 Figure 14
- ITU K.44: 2003 Figures A.5-1 and A.6.1-1 to A.6.1-5

**Safe and Easy** - All the sockets are safety banana plugs to ensure maximum safety to the user. The selected coupling path can be seen at a glimpse.

**Sturdy and Reliable** – Careful component selection ensures that the PCD 122 will continue to operate under the most strenuous testing regimen.

**Report Generation** - The unit controller can automatically generate test reports without a computer. Add WinFEAT&R control and reporting software on a host PC to collect and collate data in any format you like.

### ■ Applications

- ☑ Unshielded symmetrical data and signal lines
- ☑ Telecom equipment
- ☑ Other international requirements for 10/700µs impulses on symmetrical operated lines

## ■ Technical Specifications

Impulse shape	10/700µs	
Impulse amplitude	max. 6.6kV	
Serial Resistor	4 x 25 Ohm 4 x 50 Ohm 4 x 100 Ohm	1 wire (IEC/EN) or 4 wires / 2 pairs (ITU) 2 wires / 1 pair (IEC/EN) 4 wires / 2 pairs (IEC/EN)
Coupling elements	Gas arrestors 90V Avalanche breakdown diodes (ABDs)	
Voltage on EUT lines	max. 72V <sub>DC</sub> or 50V <sub>AC,RMS</sub> max. 144V <sub>DC</sub> or 100V <sub>AC,RMS</sub>	with gas arrestors as coupling elements with ABDs as coupling elements
Signal bandwidth	up to >10MHz up to >1MHz	with gas arrestors as coupling elements with ABDs as coupling elements

Other coupling elements on request.

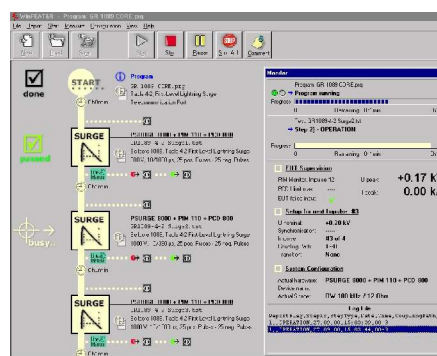
## ■ Weight and Dimensions

Weight	approx. 10 kg net	Dimensions	45 x 19.5 x 57 cm (w x h x d)
--------	-------------------	------------	-------------------------------

## ■ PCD 122 Art. No. 249802 Scope of supply

Qty. 1	PCD 122
Qty. 1	HV cable Fischer - Fischer 1m
Qty. 1	Cable set
Qty. 5	Short circuit bridges
Qty. 1	Users Manual

## WinFEAT&R Control Window



## ■ Options and Accessories

DEC 5	Decoupling unit with current compensated inductors as decoupling elements according IEC 61000-4-5 Edition 2 and ITU K.44.
DEC 6	Decoupling unit with resistors as decoupling elements according ITU K.44.
PSURGE 8000	Mainframe of the Surge Platform
PIM 120	10/700µs impulse module up to 7.4kV
WinFEAT&R	Control and reporting software. Runs under windows 98, NT, ME, 2000, XP

Headquarters  
**Haefely Test AG**  
 Lehenmattstrasse 353  
 CH-4052, Basel  
 Switzerland

+ 41 61 373 41 11  
 + 41 61 373 45 99  
[EMC-sales@haefely.com](mailto:EMC-sales@haefely.com)

Locate your local  
 sales representative at  
[www.haefelyEMC.com](http://www.haefelyEMC.com)



**HAEFELY** EMC  
 TECHNOLOGY

North American Office  
**Hipotronics Inc.**  
**Haefely EMC Division**  
 1650 Route 22  
 Brewster, NY 10509

++1 845 279 3644 x264  
 ++1 845 279 2467  
[EMCsales@hubbell-haefely.com](mailto:EMCsales@hubbell-haefely.com)