



ABN 43 064 478 842

231 Osborne Avenue Clayton South, VIC 3169
PO Box 1548, Clayton South, VIC 3169
t 03 9265 7400 f 03 9558 0875
freecall 1800 680 680
www.tmgtestequipment.com.au

Test & Measurement

- > sales
- > rentals
- > calibration
- > repair
- > disposal

Complimentary Reference Material

This PDF has been made available as a complimentary service for you to assist in evaluating this model for your testing requirements.

TMG offers a wide range of test equipment solutions, from renting short to long term, buying refurbished and purchasing new. Financing options, such as Financial Rental, and Leasing are also available on application.

TMG will assist if you are unsure whether this model will suit your requirements.

Call TMG if you need to organise repair and/or calibrate your unit.

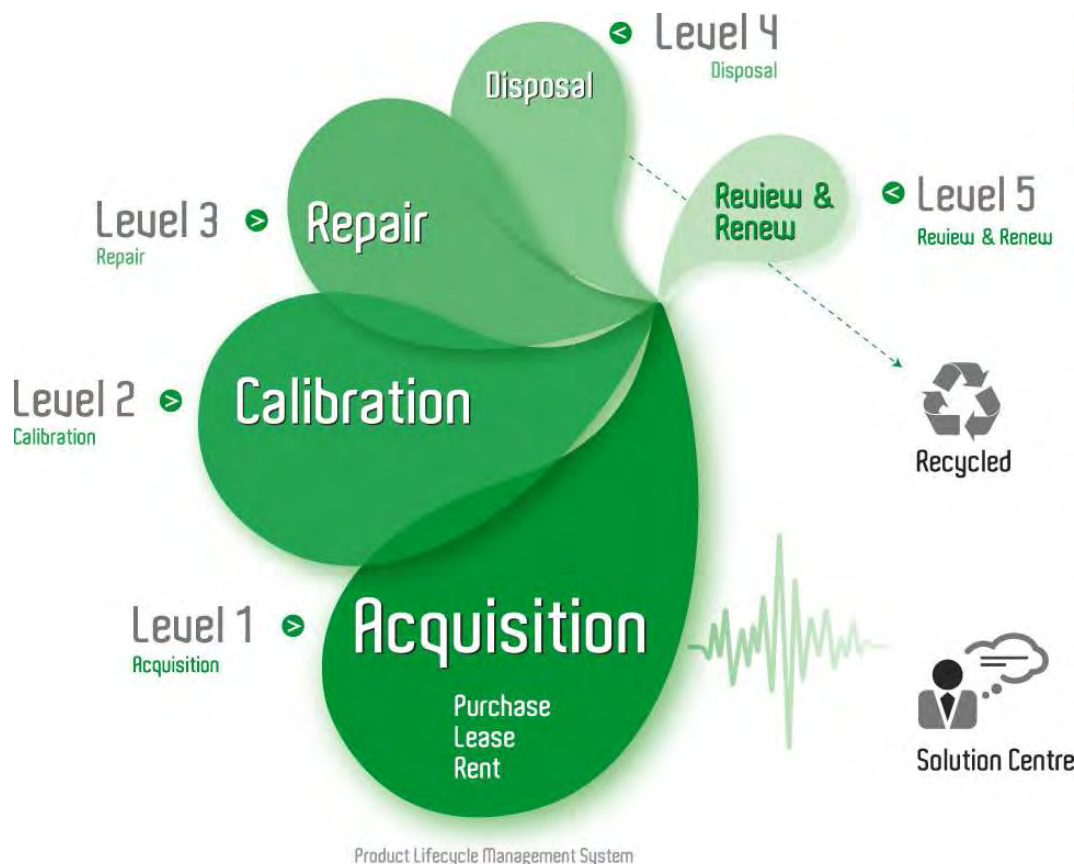
If you click on the "Click-to-Call" logo below, you can call us for FREE!

TMG Corporate Website

TMG Products Website



Click-to-Call
TMG Now



Disclaimer:

All trademarks appearing within this PDF are trademarks of their respective owners.

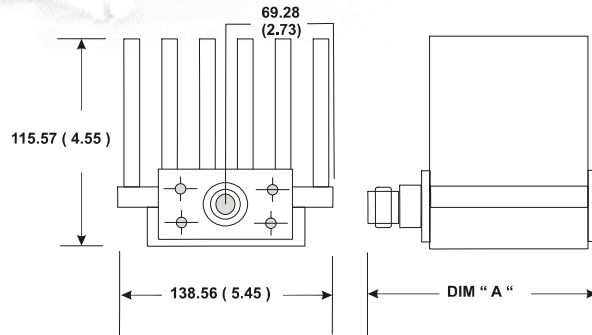
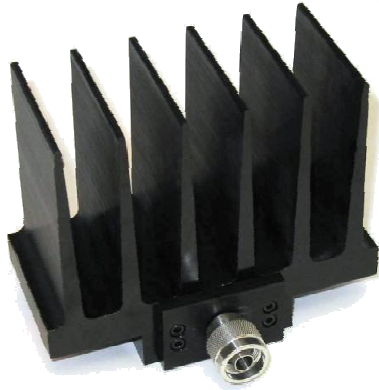


TERMINATION

MODEL WA1465

DC – 2.5 GHz

150 WATTS



Features

Stainless Steel Type N or 7/16 DIN M/F connectors per MIL-STD-348A, interface dimensions mate nondestructively with MIL-PRF-39012.

Specifications

Nominal Impedance: 50 ohms

Frequency Range: DC – 2.5 GHz

Operation: Horizontal or Vertical

Maximum VSWR: 1.20

Calibration: VSWR performed across frequency range. Calibration test data available at additional cost.

Power Rating: 150 watt maximum rated average power to 25°C ambient temperature, mounted horizontally or vertically, (*with unobstructed air flow for natural convection cooling*) de-rated linearly to 0 watts at 125°C, 10 kilowatt peak (5 µsec pulse width; .75% duty cycle).

Temperature Range: Full power from -55°C to 100°C, Case temperature. -55°C to 125°C

Construction: Passivated stainless steel connectors with black fined aluminum body. Gold plated beryllium copper female contacts or passivated stainless steel male contacts.

Weight:

Type N .91 Kg/ 2 lbs.
7/16 DIN 1.0 Kg/ 2.2 lbs.

Physical Dimensions: Connector Options

Connector	Dimension "A"
Type N Male (-4)	96.6 (3.8)
Type N Female (-3)	88.9 (3.5)

Note: Dimensions are given in mm (inches) and are maximum, unless otherwise specified



WEINSCHEL ASSOCIATES

TEL: 877.948.8342 / 301.963.4630 ♦ Fax: 301.963.8640

WEB: <http://www.WeinschelAssociates.com>

EMAIL: sales@WeinschelAssociates.com

113

Specification
Subject to change
without notice