



ABN 43 064 478 842

231 Osborne Avenue Clayton South, VIC 3169
PO Box 1548, Clayton South, VIC 3169
t 03 9265 7400 f 03 9558 0875
freecall 1800 680 680
www.tmgtestequipment.com.au

Test & Measurement

- > sales
- > rentals
- > calibration
- > repair
- > disposal

Complimentary Reference Material

This PDF has been made available as a complimentary service for you to assist in evaluating this model for your testing requirements.

TMG offers a wide range of test equipment solutions, from renting short to long term, buying refurbished and purchasing new. Financing options, such as Financial Rental, and Leasing are also available on application.

TMG will assist if you are unsure whether this model will suit your requirements.

Call TMG if you need to organise repair and/or calibrate your unit.

If you click on the "Click-to-Call" logo below, you can call us for FREE!

TMG Corporate Website

TMG Products Website



Click-to-Call
TMG Now



Product Lifecycle Management System

Disclaimer:

All trademarks appearing within this PDF are trademarks of their respective owners.

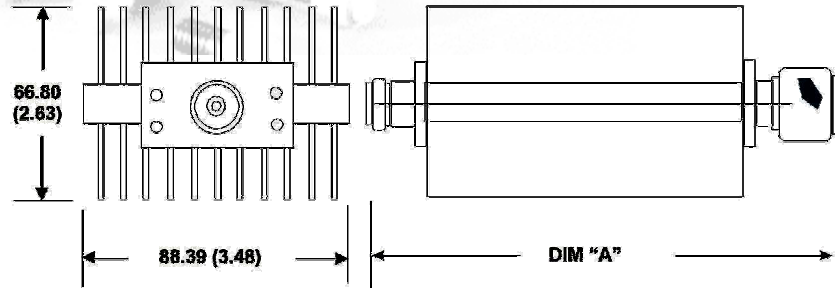
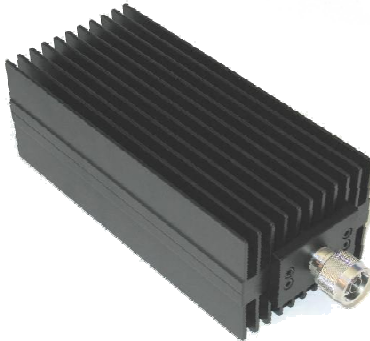


Fixed Coaxial Attenuator High Power

MODEL WA36

DC – 8.5 GHz

300 WATTS



Features

Type N or 7/16 stainless steel M/F connectors per MIL-STD-348A, interface dimensions mate nondestructively with MIL-PRF-39012. Designed to meet MIL-DTL-3933 environmental specification.

Specifications

Nominal Impedance: 50 ohms.

Frequency Range: DC - 8.5 GHz.

Nominal dB Values: 10 - 40 dB.

Power Sensitivity: < 0.0001 dB/dB/W;
Unidirectional in power.

Power Rating: 300 watt CW/ 5KW peak. Maximum rated average power to 25°C ambient temperature, derated linearly to 25 watts at 125°C. 5 kilowatt peak (5 µsec pulse width; 1.5% duty cycle).

Temperature Range: -55°C to +125°C.

Temperature Coefficient: < 0.0004 dB/dB/°C

Maximum VSWR:

Frequency (GHz)	VSWR
DC - 4.0	1.30
4.0 – 8.5	1.45

Standard Nominal Values and Deviations:

Attenuation (dB)	Accuracy ± dB
	DC - 8.5 GHz
10,20,30	0.75
40	1.0

Construction: Black aluminum alloy body with passivated stainless steel connectors. Gold plated beryllium copper contacts.

Calibration: Insertion Loss and VSWR performed across frequency range. Calibration test data available at additional cost.

Weight: 1.28 kg/ 2.75 lbs.

Length: 233.93 (9.21).

Width: 79.45 (3.13).

Height: 50.55 (1.99).

Note: Dimensions are given in mm (inches) and are maximum ± .05 in., unless otherwise specified.



WEINSCHTEL ASSOCIATES

TEL: 877.948.8342 / 301.963.4630 ♦ Fax: 301.963.8640

WEB: <http://www.WeinschelAssociates.com>

EMAIL: sales@WeinschelAssociates.com

33

Specification
Subject to change
without notice