



## *Enabling Australia's Field Technicians to build, troubleshoot and maintain better communications networks.*



This reference material is provided by TMG Test Equipment, VI.AVI's **only** Master Distributor for Contractors in Australia



**Industry Best Pricing**



**Finance Available**



**Short to Medium Project-Based Rental Solutions**



**Dedicated Technical & After-Sales Support**



**In-house Diagnostics, Repair & NATA Calibration Laboratory**



**FREECALL 1800 680 680**

## TestPoint Group Controller



### Key Features

- Single-point management access to the TestPoint Chassis for multiple modules from a single interface
- Global test functions which control multiple modules simultaneously
- External clocking capabilities to modules via backplane
- Timestamp synchronization source for one-way latency measurements (10 Gbps)
- Multi-user environment to access multiple modules



### Compliance

- CSA Certificate of Compliance to CAN/CSA C22.2 No 60950-1 (2003) & ANSI/UL 60950-1 (2003) with CSA Mark for Canada & USA
- CSA CB Certificate of Compliance to EN60950-1, IEC 60950-1 and National Deviations with CE Marking
- Class 1 Laser Product, with compliance to EN 60825, IEC 60825 and FDA/CDRH requirements

The JDSU TestPoint Group Controller is an optional single-slot module that plugs into slot 0 of the TestPoint TS-30 and TS-170 chassis. It provides the following main functions:

- Single LAN (Static IP or DHCP) access point for test system management
- Enables a single IP address for an entire chassis when the TestPoint chassis contains multiple test modules
- Without the Group Controller each module's faceplate can be connected directly to the LAN
- Global test function capability to control testing across multiple modules within a chassis
- Synchronized test start for multiple modules
- Advanced clocking capabilities
- Expanded clocking features beyond those available on individual test modules
- Multiple external clock synchronization options
- Timing synchronization across entire chassis

**INTERFACE SPECIFICATIONS**

LAN (Ethernet) Port	RJ-45 (10/100BASE-T)
Operator Port	RJ-12 into RS-232 serial cable
External Clock Input	50 Ohm SMA (multiple frequencies)
T1	BITS (1.544 Mbps) on 100 Ohm balanced. Bantam connector
E1	SSU (2.048 Mbps) on 75 Ohm unbalanced. BNC connector
GPS Timestamp	RS-232 (currently unused)
1 PPS	1 Hz pulse from GPS on 50 Ohm SMA

**GLOBAL TEST FUNCTIONS**

Test functions may be performed individually on each module or globally via the Group Controller. Global test functions include:

- Providing per-slot test status (major, minor, history indicators)
- Concurrent test start/stop on multiple modules
- Concurrent save and restore of the test configuration on multiple modules
- Enabling and disabling of event logs on multiple modules
- Concurrent clearing of errors, events, LEDs on multiple modules
- Selectable module reset within chassis

**CLOCKING**

Group Controller clocking is distributed to modules via the backplane.

**Clock Sources**

Internal, External, or any Module Recovered Clock

**Internal Generator**

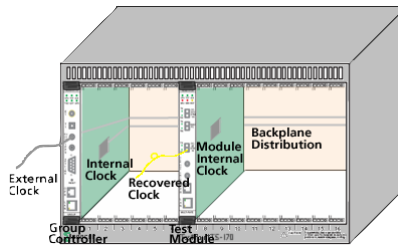
Internal Accuracy	+/- 4.6 ppm
Offset Range	+/- 35 ppm
Offset Step Size	0.1 ppm

**External Source: T1 / E1 / External**

T1	100 Ohm Bantam
E1	75 Ohm BNC
External	50 Ohm SMA
8kHz / 1.544 MHz / 2.048 MHz / 5.0 MHz / 10.0 MHz / 19.44 MHz / 77.76 MHz / 155.52MHz	

**Module Recovered Clock**

Source clock from any Module's Line Recovered Clock


**SYSTEM**
**Connectivity and GUI**

Requires PC and 10/100BASE-T LAN link. Static IP and DHCP (dynamic IP) are supported.

GUI interface via web browser and Java plug-in. No PC software required.

TS-30/170: PC connects to modules via the Group Controller (one LAN cable) or directly to each module's faceplate.

TS-30/170: Group Controller supports multiple concurrent users.

**Automation**

Via Command Line Interface (CLI) ASCII commands.

Connection to CLI via Telnet, socket connections, or serial port.

Automation toolkits available in: Python / C / TCL

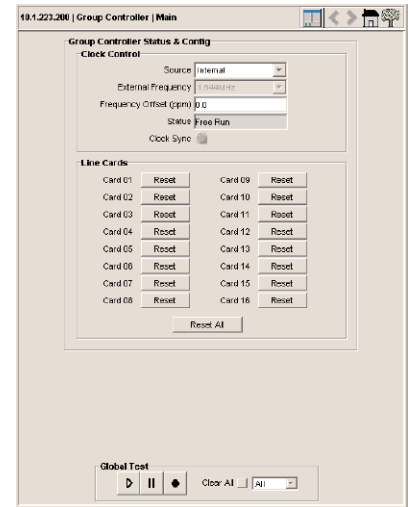
**Management Functions**

GUI installation tool provided for field software upgrades.

Each test module has non-volatile storage for: software loads / configuration files / event logs / test results / capture files

Result files (event logs / test results / RFC 2544 results) from test modules can be automatically transferred to the controlling PC

TS-30/170: Group Controller module provides external clocking ports: T1 / E1 / GPS (including 10MHz) / and other rates


**ORDERING INFORMATION**
**N530-0110 Group (& Clock) Controller Module**

CPU to control multiple TestPoint modules  
Clocking support: BITS, GPS, 10MHz input, integrated clock rate variations

All statements, technical information and recommendations related to the products herein are based upon information believed to be reliable or accurate. However, the accuracy or completeness thereof is not guaranteed, and no responsibility is assumed for any inaccuracies. The user assumes all risks and liability whatsoever in connection with the use of a product or its application. JDSU reserves the right to change at any time without notice the design, specifications, function, fit or form of its products described herein, including withdrawal at any time of a product offered for sale herein. JDSU makes no representations that the products herein are free from any intellectual property claims of others. Please contact JDSU for more information. JDSU and the JDSU logo are trademarks of JDS Uniphase Corporation. Other trademarks are the property of their respective holders. ©2008 JDS Uniphase Corporation. All rights reserved. 30149289 000 0108 TESTPOINTGC.DS.LAB.TM.AE

**Test & Measurement Regional Sales**

<b>NORTH AMERICA</b> TOLL FREE: 1 866 228 3762 FAX: +1 301 353 9216	<b>LATIN AMERICA</b> TEL: +55 11 5503 3800 FAX: +55 11 5505 1598	<b>ASIA PACIFIC</b> TEL: +852 2892 0990 FAX: +852 2892 0770	<b>EMEA</b> TEL: +49 7121 86 2222 FAX: +49 7121 86 1222	<a href="http://www.jdsu.com/test">www.jdsu.com/test</a>
---	--	---	---	--