



# RADIODETECTION®



 **FREECALL 1800 680 680**



**Dedicated Technical & After-Sales Support**



**Industry Best Pricing**



**Finance Available**



**Short to Medium Project-Based Rental Solutions**



**In-house Diagnostics, Repair & NATA Calibration Laboratory**



**CONTRACTOR ESSENTIALS**

ContractorEssentials.com.au

This reference material is provided by TMG Test Equipment, an Australian Radiodetection Distributor

RADIODETECTION®

# RD1100™ & RD1500™ Ground Penetrating Radar

Complete range of utility-locating radars



SPX®

# Radiodetection's RD1100 & RD1500 Ground Penetrating Radar

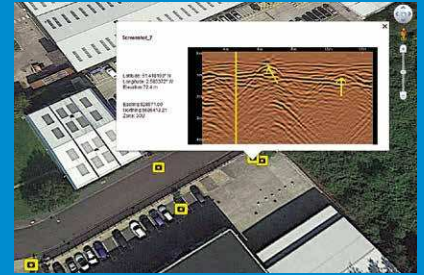
Innovative tools for finding  
buried utilities



**RD1100** provides locate professionals, surveyors and other users with the tool they need to trace and mark the position of all types of cable and pipe, including plastic and ceramic. Built in as standard is the ability to take Screenshots which are saved to internal memory for immediate emailing via Wi-Fi or later export to USB memory stick. GPS positioning is captured for integration into Google Earth™.

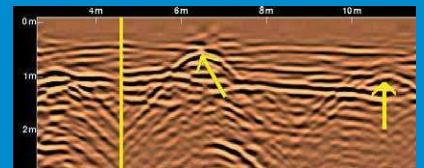
**RD1500** takes utility locating to the next level, offering users easily interpreted Depth Slices as well as traditional Line Views.

Use proprietary **FrequenSee™** technology to highlight small/shallow, medium or large/deep buried utilities. Enhance the RD1500 with software to export GPR data and perform detailed analysis, and with external GPS for higher positional accuracy.



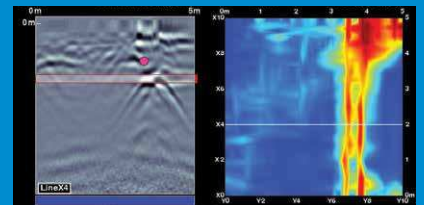
## Geo-referenced data

Display the position of your surveys in Google Earth™ and other geo-referencing programs.



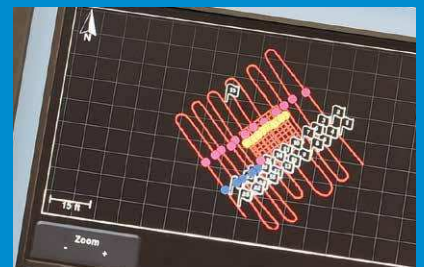
## Screen captures

Add markers via the touch screen display to highlight features of interest.



## Depth Slices (RD1500)

View horizontal slices at different depths to display cables, pipes and other utilities in unprecedented clarity.



## On-site Map View (RD1500)

View your identified features in plan map view using the optional external GPS.

# Advanced Reporting with RD1500 data analysis PC software

RD1500's Enhancement Package includes the comprehensive EKKO\_Project PC software solution for GPR data analysis and management, allowing you to:

- **Slice** through the depth data on your computer
- **Generate** PDF reports that include data images, screenshots and photos alongside your text and company logo
- **Export** data to other formats like CSV, SEG-Y etc.

3 additional modules to add to the Enhancement Package, for even greater levels of analysis, are available in Utility Suite:

- **LineView** modifies and displays GPR lines
- **SliceView** processes and displays grid data, and can output data for 3D visualization and geo-referencing software programs
- **Interpretation** for adding point, polyline, box and annotation interpretations to GPR lines in post-processing

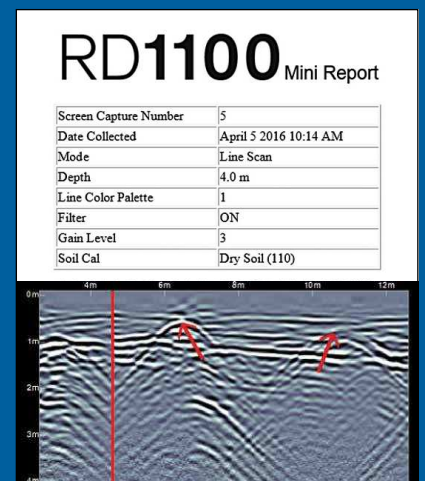
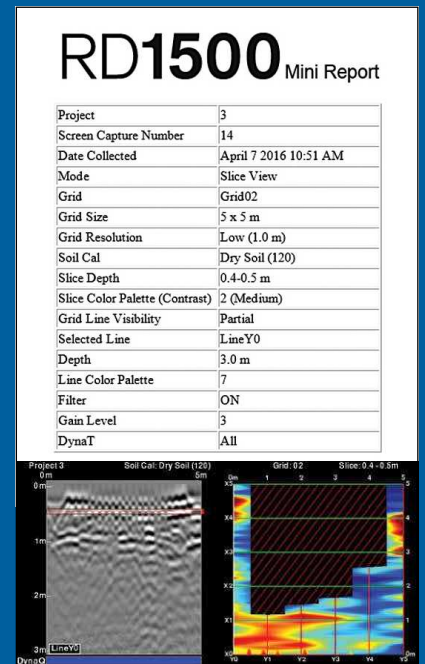
## Table of specifications

	RD1100 & RD1500	Options & comments
Sensor frequency	250MHz Ultra Wide Band	<b>RD1500:</b> Includes FrequenSee
Signal Enhancement	DynaQ (optimizes data quality with cart speed). Spatial filtering.	
Data Analysis	In field analysis	<b>RD1500:</b> Post-processing analysis with EKKO_Project and Utility Suite (option)
Touch Screen Display	Size: 21cm (8") diagonal	<b>Enhanced:</b> Upgraded Display Unit package
Power	Consumption: 1.25A at 12V Battery: 12V, 9Ah Lead Acid	Battery life typically 4-6hrs
Spatial interval	5 cm (2")	
Depth range	Up to 8m (27') maximum	Ground conditions dependent
Display depth scale	1m-8m (3'-30')	
Languages supported	Non-lingual icons, English, Spanish, French, German	
Dimensions (H x W x D)	100 x 70 x 115cm (39.4 x 27.6 x 45.3")	
Weight	22 kg (48lb)	
Operating temperature range	Display: -10° to +50°C (14°F to +122°F) Sensor: -40°C to +50°C (-40°F to 122°F)	
Environmental protection	IP65	
Compliance	CE, FCC, ETSI, Industry Canada	
Standard warranty	1 year	



## Instant email

Generate and deliver mini reports from your survey site by connecting to a Wi-Fi network or by using your phone as a hotspot. Instant information, higher productivity.



# GPR system accessories


A comprehensive range of accessories complement the RD1100 and RD1500, broadening their application range, and to provide extra protection during transport.

The products' modular designs also allow for replacement of a number of the key component parts without requiring specialist tools.

## Wheel sets

Large Wheel Set for GPR Carts  
Part No: 10/GPRLGWHEELS



 Set of 4 wheels for GPR  
Part No: 10/GPRWHEELSET  
1 x GPR wheel  
Part No: 10/GPRWHEEL

## Transport options

Hard case for GPR display  
Part No: 10/GPRDISPLAYCASE



Soft case for GPR display unit  
Part No: 10/GPRDISPBAG

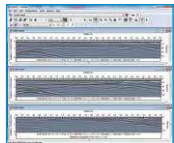


Flight case for GPR system  
Part No: 10/GPRFLIGHTCASE

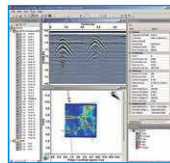


## Software

RD1500 Enhancement Upgrade  
Part No: 10/RD1500EUPGRADE



RD1500 Utility Suite Analysis Software  
Part No: 10/UTILITY\_SUITE



## Replacement parts

RD1100 sensor assembly  
Part No: 10/RD1100SENSOR

RD1500 sensor assembly  
Part No: 10/RD1500SENSOR




 Replacement sensor skid pad  
Part No: 10/GPRSKIDPAD

RD1100 display unit  
Part No: 10/RD1100DISPLAY



RD1500 display unit  
Part No: 10/RD1500DISPLAY



 Display mount assembly  
Part No: 10/GPRMOUNT

RD1100 GPR cart handle  
Part No: 10/RD1100HANDLE



RD1500 GPR cart handle  
Part No: 10/RD1500HANDLE

GPR lower cart assembly (no wheels)  
Part No: 10/GPRCART



GPR replacement battery pack  
Part No: 10/GPRBATTERY




Battery Charger – 100V-240V for global use  
Part No: 10/GPRCHARGE



Mains leads for battery charger

Part numbers:  
US / CAN type: 04/MC-1020  
European type: 04/MC-3020  
UK type: 04/MC-5020  
Australia type: 17/GP3071-C13-25-BK-10A-I



 GPR Battery cable  
Part No: 10/GPRBATTCABLE

Display to sensor connection cable  
Part No: 10/GPRDISPCABLE



GPR Odometer Assy and Cable  
Part No: 10/GPRODOMETER

Battery Strap  
Part No: 10/GPRBATTSTRAP



GPR 13" Sensor support strap  
Part No: 10/GPRSTRAP



GPR Handle Pin x 2  
Part No: 10/GPRPIN



RD1500 GPS Package  
Part No: 10/RD1500GPSPACKAGE



High Resolution, touch screen display

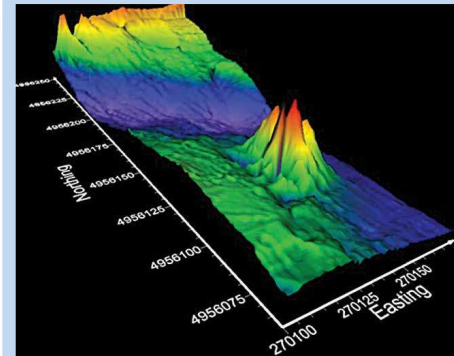
Wi-Fi and USB for transfer of data. Built-in GPS

External GPS option for RD1500

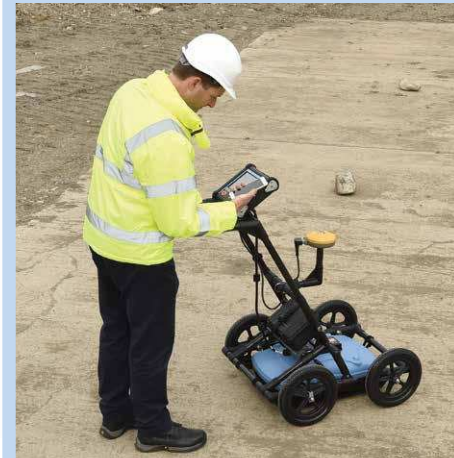
Battery

Antenna system optimised for location of buried utilities. RD1500 version includes FrequenSee™

Odometer



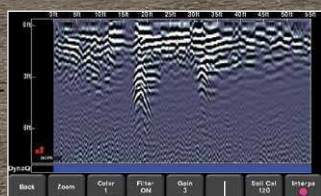
3D data exported using Utility Suite



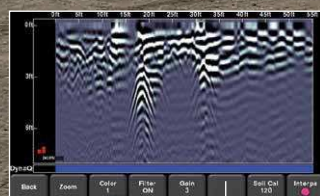
## FrequenSee™

Allows the user to select the low, medium or high part of the frequency spectrum giving the benefits of multiple antennas while maintaining the quality of a single antenna system.

FrequenSee exploits the wide bandwidth of the RD1500 antenna, selectively enhancing shallow and small, medium depth and size, or deep and large targets. Or all at once!



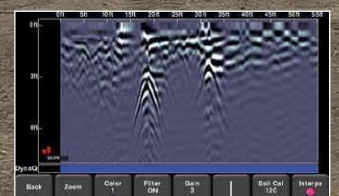
Small



Medium



Large



All